



US Forest Service Forest Inventory and Analysis



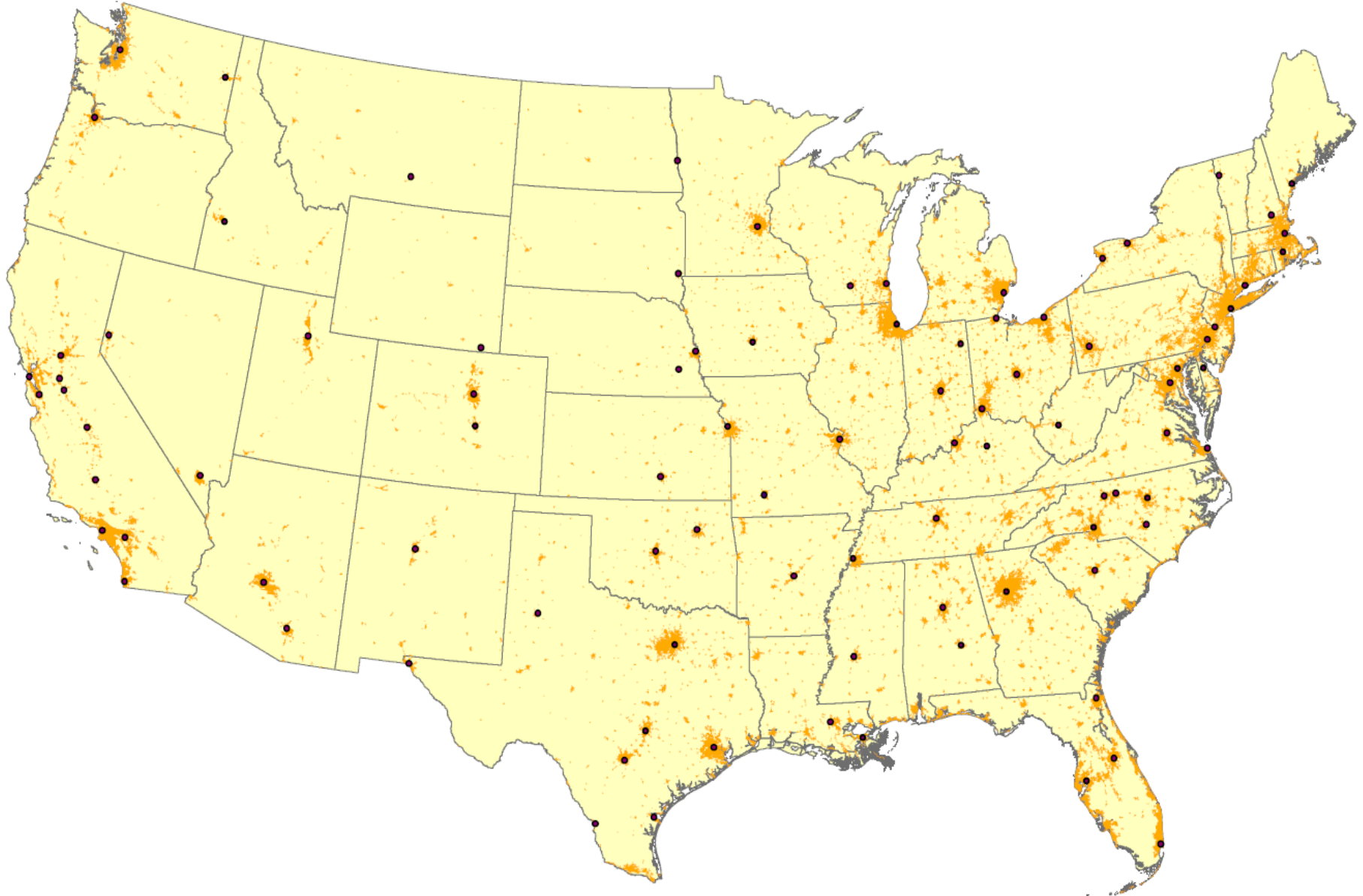
URBAN FIA

URBAN Forest Inventory & Analysis

The Power of a Story



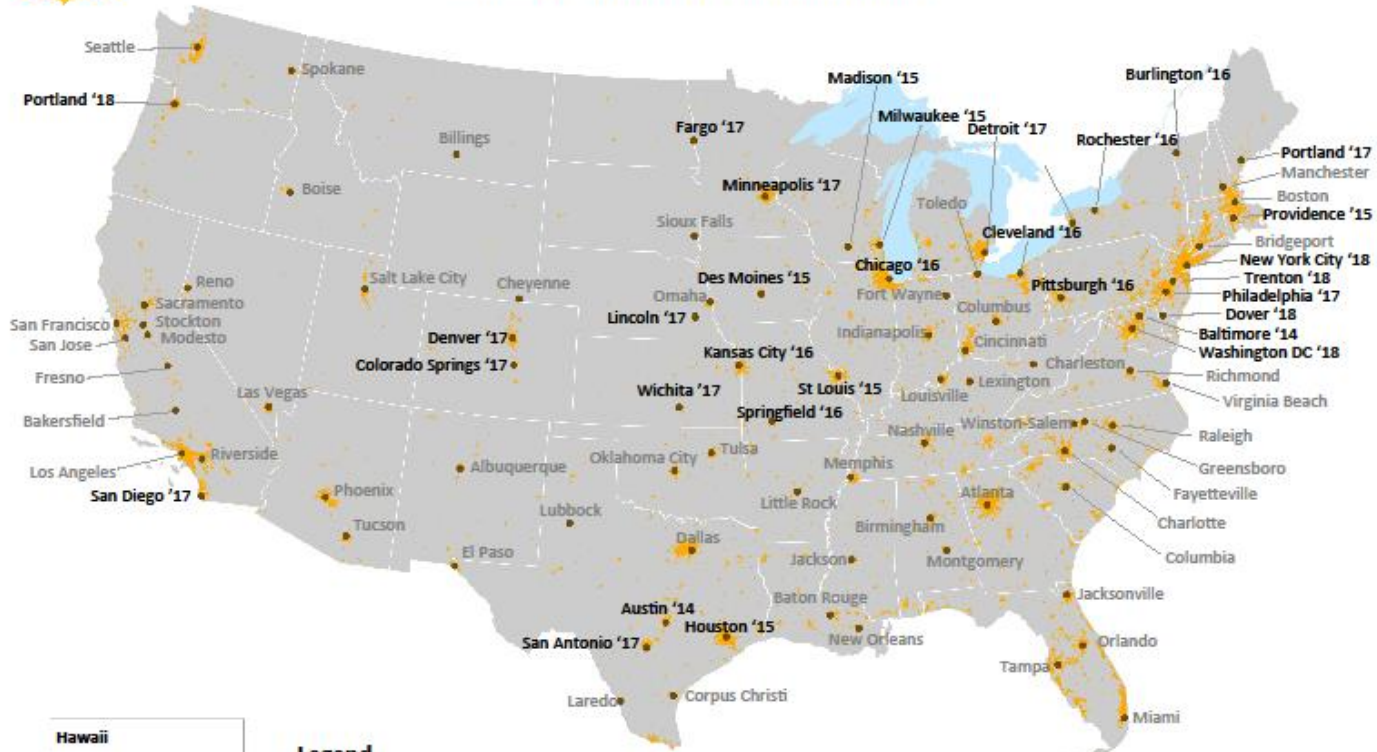
Urban Areas / Urban Clusters & Cities



Current UFIA Implementation

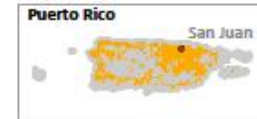


U.S. Forest Service Urban Forest Inventory & Analysis (FIA) Cities



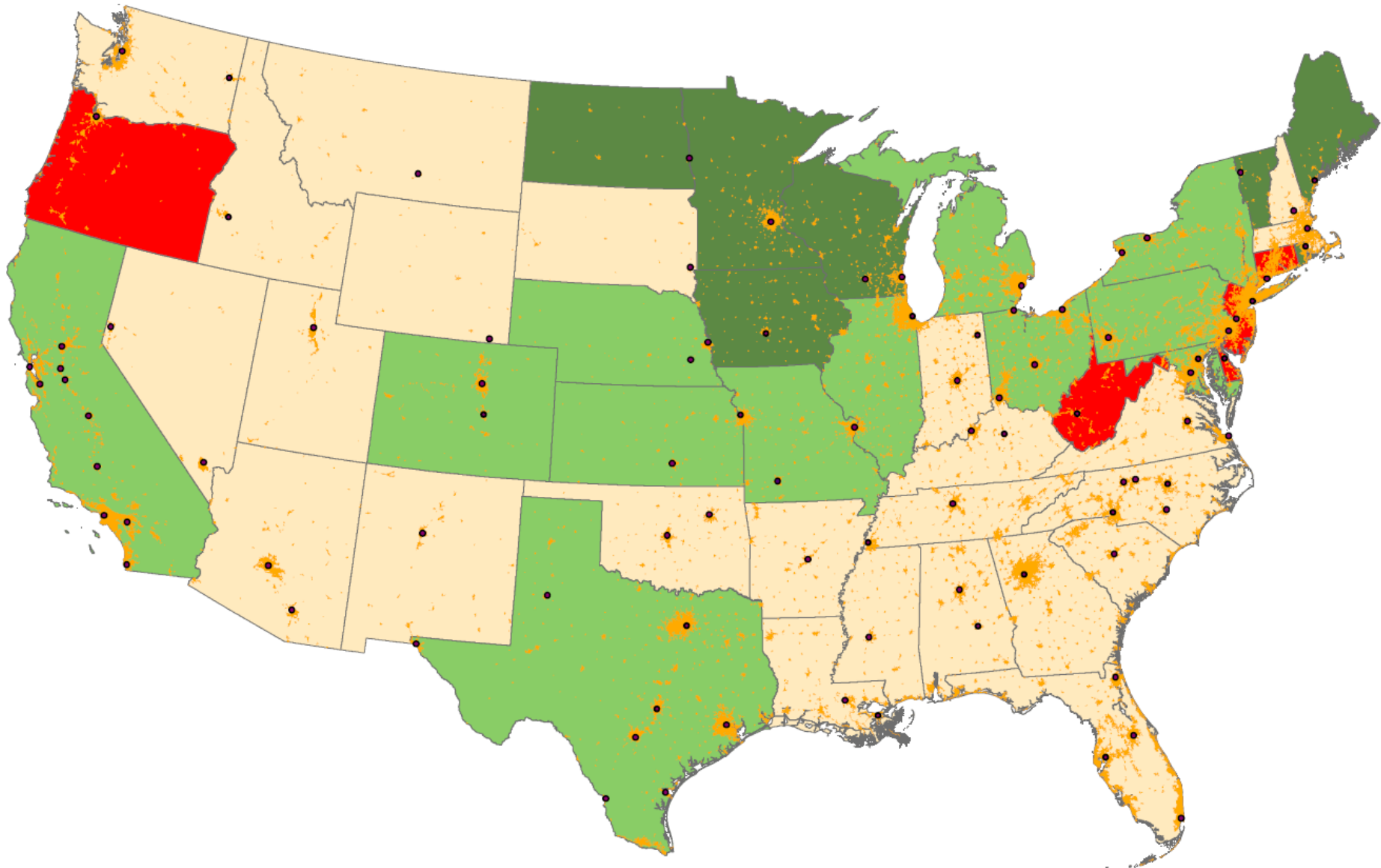
Legend

- Cities proposed for Urban FIA data collection and reporting (implementation year noted)
 - Urban Areas/Clusters as defined by the 2010 U.S. Census
- Not showing Anchorage, Alaska



Updated March 2017

Current UFIA Implementation



4 Years of Progress - Thanks to Our Cooperators

- About 1000 Plots Completed Nationwide in 2016
- Average Production Costs of 2-3 Plots / Day
- All 4 FIA Units in 2017
 - 26 Cities
 - 12 States with Active Projects
 - 7 States with Full Implementation (statewide UAUC)
- 610 K in In-Kind and Value Added Cooperator Contributions in 2017
- 2 Completed Reports
- 2018
 - NYC, Bridgeport, Trenton, Dover, DC, Charleston?
 - Fort Worth ?
 - Portland OR?

How is UFIA Implemented?

At this point in time we are working with state and local agencies in order to get additional target cities implemented.

Staffing - Best mix (Fed crews, States, partners, contracts)

- All must be trained
- All must be certified
- All must pass check plots

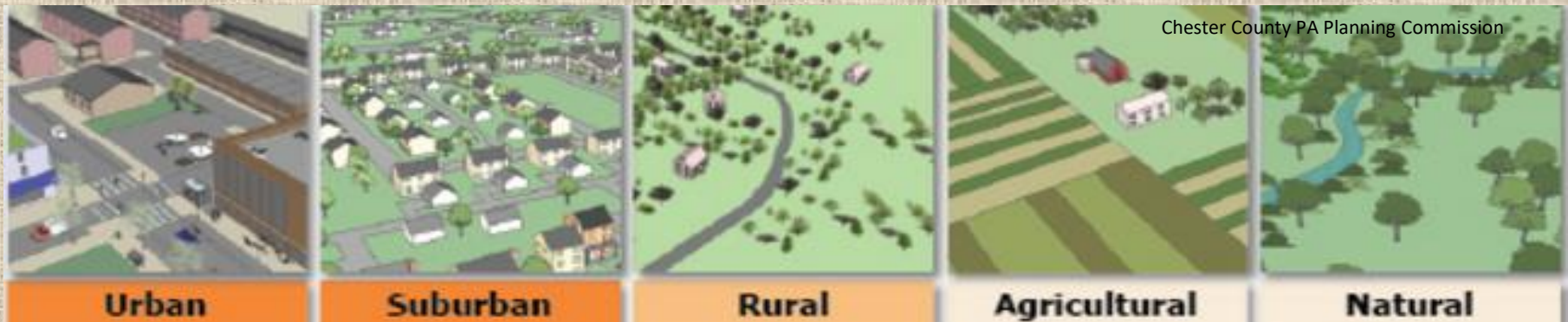
Many different staffing models:

- TX State Crews
- RI Mix of State & Federal
- MO Agreement / Contract
- WI Contractors
- MD Federal Crews
- VT State/University/Federal



Reporting Teams

- **Reporting Team**
 - Houston Report is in the Final Stages of Publication
 - Diverse Group of Researchers Charting the Future Direction of UFA Reporting
- **Template / Outputs Team**
 - Create a UFIA National Reporting Template
 - Expand Beyond Standard i-Tree Outputs Used in the Past
- **Public Engagement**
 - ESRI Urban Story Map is in Review for Publication
- **Urban to Rural Analyses Team**
 - How to include Rural FIA Data for Contextual Comparisons to UFIA Data



A Tree is a Tree



Integrating Inventory Systems



United States Department of Agriculture

Austin's Urban Forest 2014



Forest Service

Northern
Research Station

Resource Bulletin
NRS-100

Publication Date
February 2016

- **2015** Austin's Urban Forest
- **2017** Houston's Urban Forests
- **2018** San Diego
 - Preliminary Data loaded to My City's Trees
 - Baltimore
 - San Antonio
- **2019** San Antonio
St. Louis, Springfield, & Kansas City MO
 - Preliminary Data Loaded to My City's Trees
 - Providence
 - Des Moines
 - Madison & Milwaukee
 - WI UAUC
- **2022** 5 more reports
- **2023** 6 more reports



MY CITY'S TREES

MY CITY'S TREES

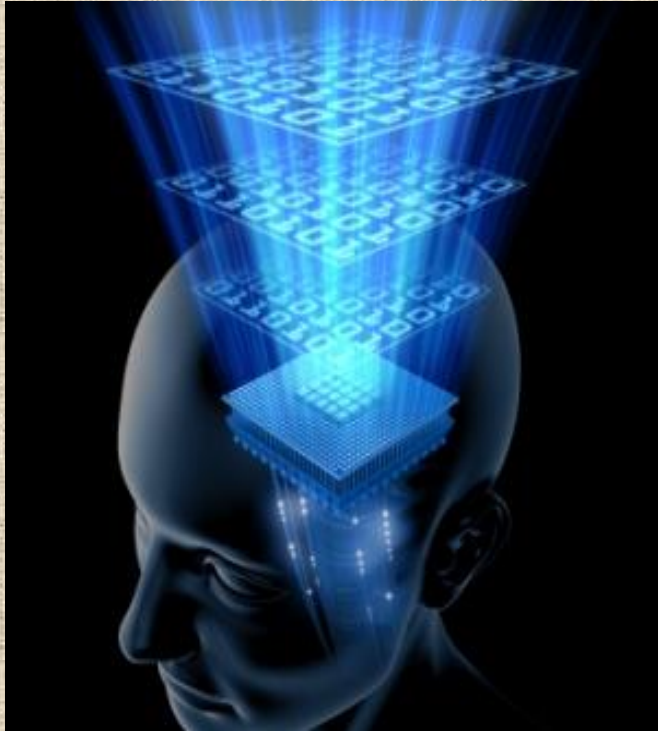
BRINGING THE NATION'S FOREST CENSUS TO URBAN AREAS

OPEN APPLICATION



PARTICIPATING CITIES

Information Management



- **Urban FIA DB 2.0**
 - Public Release in Late Summer
- **Work continues on:**
 - 2.0 Urban-EVALIDator
 - 2.0 DB Documentation
 - 2.0 My City's Trees
- **GRM Team** will be Starting Work on Urban-GRM
- **Converted i-Tree Energy Effects Outputs** from Population-level to Building Interaction-level



Urban EVALIDator Version 1.6.0.03

Revision date: February 22, 2016 Draft!!! Do not use for reporting results

Step 1 of 3 (choosing the retrieval type and estimate type)

National
Woodland
Owner
Survey



National Woodland Owner Survey, USDA Forest Service
1992 Forest Act, 36 Fed. Reg. 11141
Forest Act (1992) (36 Fed. Reg. 11141)
Internet: www.fs.fed.us/nwosurvey
USDA No. 0016007X Approved Expires Dec. 31, 2004

Urban NWOS Quick Facts

- What?
 - Who?
 - Where?
 - When?
- Pre-testing a survey instrument to measure attitudes and behaviors of urban residential owners regarding their trees and other green spaces
 - Private urban residential owners with some type of green space (yard, garden, trees)
 - 3 Pilot cities
 - Austin, TX with Texas A&M Forest Service
 - Madison, WI with the Wisconsin DNR
 - Baltimore, MD with the Urban Field Station
 - Pilot surveys began December 2015 with results from Austin expected by April 2016

Want more information? Contact Brett Butler, NWOS coordinator, bbutler01@fs.fed.us

Urban Timber Product Output (UTPO)

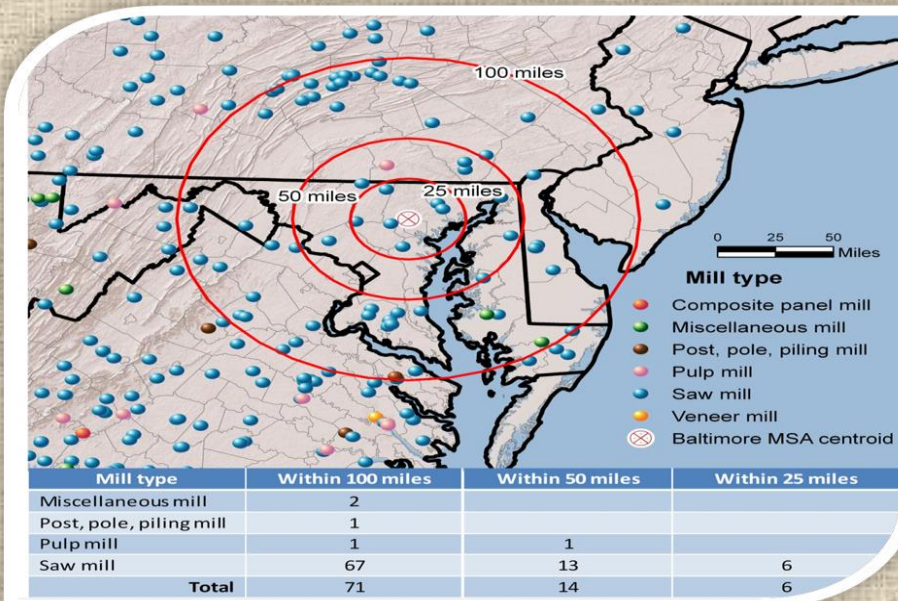
Resources

Willing Motivated Partners

Working knowledge of Urban Wood

3 Form Approach:

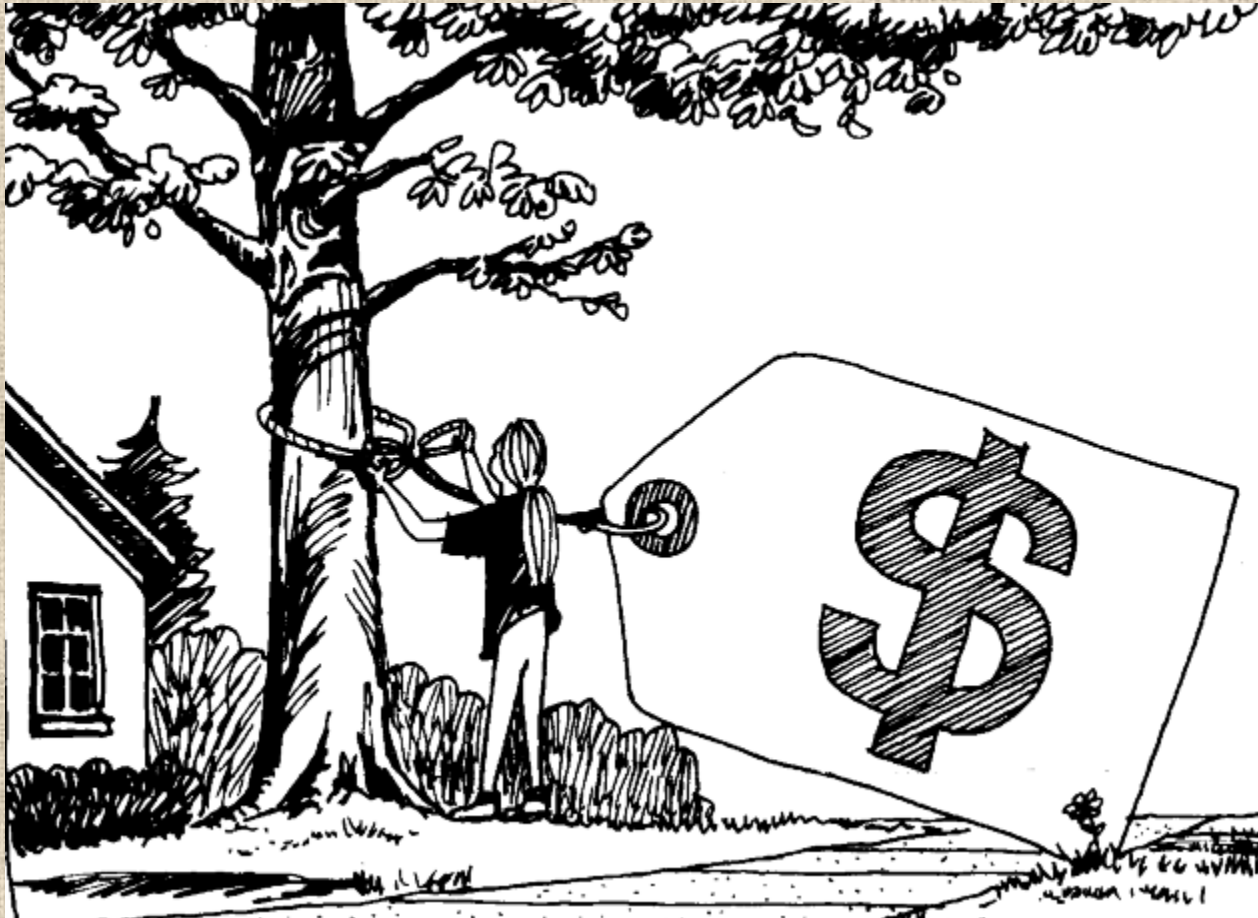
- *Collection Yards*
- *Points of Operation*
- *End Products*



The Power of a Story



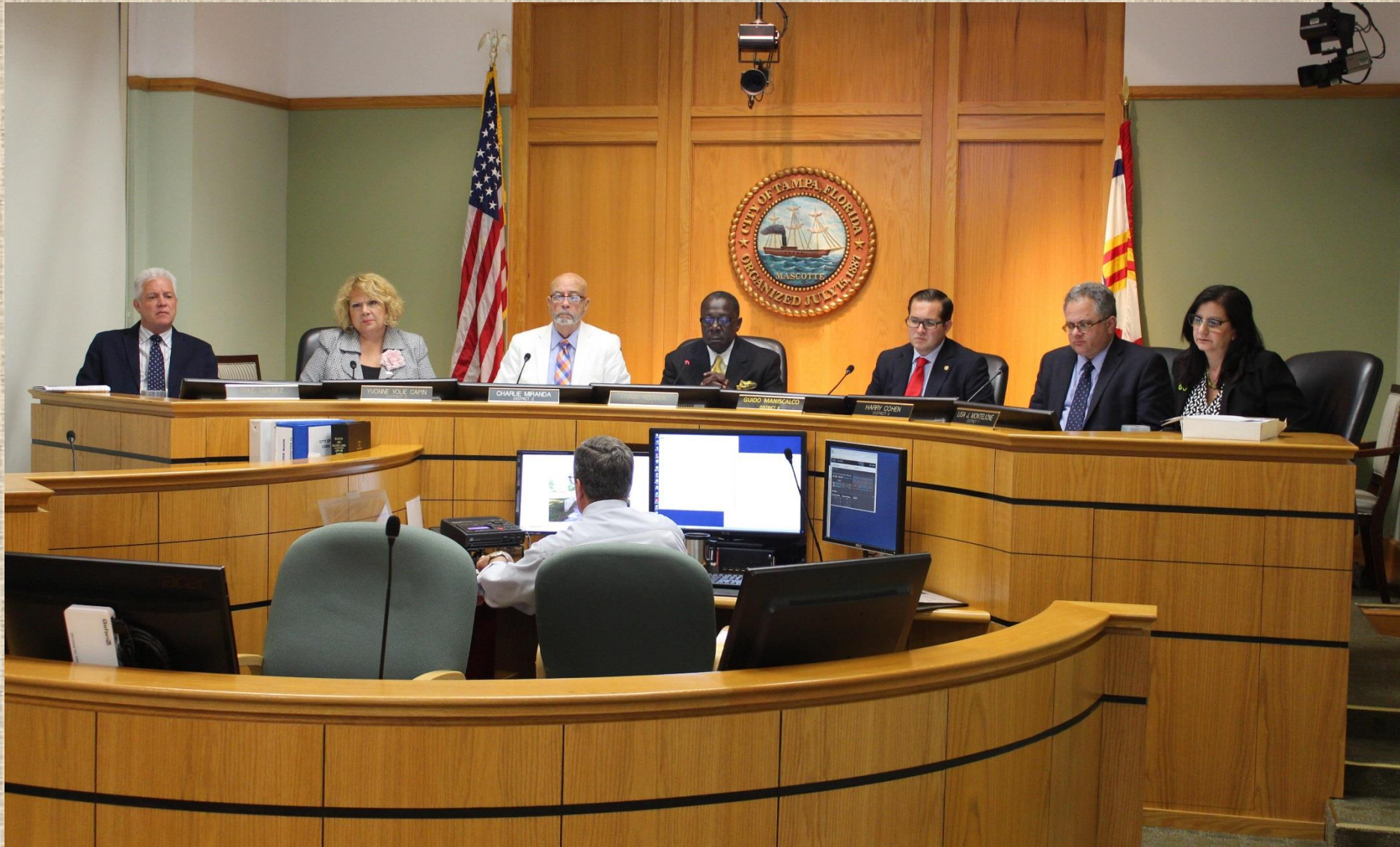
How do we quantify these benefits?



Telling the Story



Telling the Story



For general information regarding UFIA:

Mark Majewsky
Supervisory Forester
USDA FS Northern Research Station
Tofte, MN 55615
mmajewsky@fs.fed.us
651-261-0053

Urban FIA Field Guide & General Information:
<http://www.nrs.fs.fed.us/fia/urban/>

We are always looking for **“willing and able” partners & cooperators**. If you are interested in getting your “Hub City” involved please contact you regional FIA Program Manager:

For more information on Urban FIA
Visit the Urban FIA national web site at http://www.fs.fed.us/urban_FIA or contact one of the offices below.



Washington, DC
703-605-4177

North
St. Paul, MN
651-649-5139

South
Knoxville, TN
865-862-2000

Interior West
Ogden, UT
801-625-5407

Pacific West
Portland, OR
503-808-2034

North:

Dennis May

South:

Bill Burkman

Interior West:

Michael Wilson

Pacific West:

Gretchen Nicholas