

FIA User Group Meeting - Welcome -

Michael Ritter, Assistant Director
USDA Forest Service, Forest Products Laboratory
Madison, Wisconsin



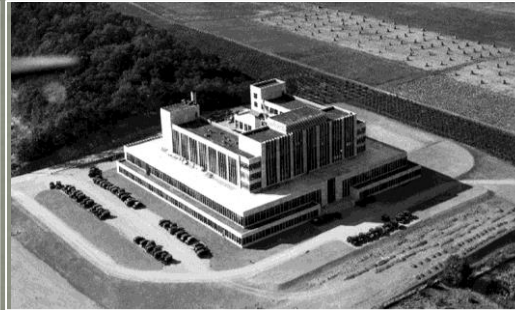
About FPL



1910



1910-1931



1931 - Present



- Established in 1910 and located in Madison, WI through a university competition
- 1 of 7 research units in the Forest Service
- 12 buildings located on 20 acres, Valley View test site, Starkville, MS termite laboratory
- 165 PFT employees + visiting staff; 53 “Scientists”
- Budget was historically \$20 million; \$27 million in FY 2016 -17
- Divided into two broad research areas; Wood Fiber and Composites Research and Wood Products Research



Centennial Research Facility



Guiding Principles

- **America's forests are a major strategic asset that provide environmental, social, and economic benefits**
- **The US cannot maintain healthy, sustainable forests without an equally healthy and competitive forest products industry**
- **A key element in maintaining healthy, resilient forests is our ability to provide value-added products from the full complement of forest biomass**



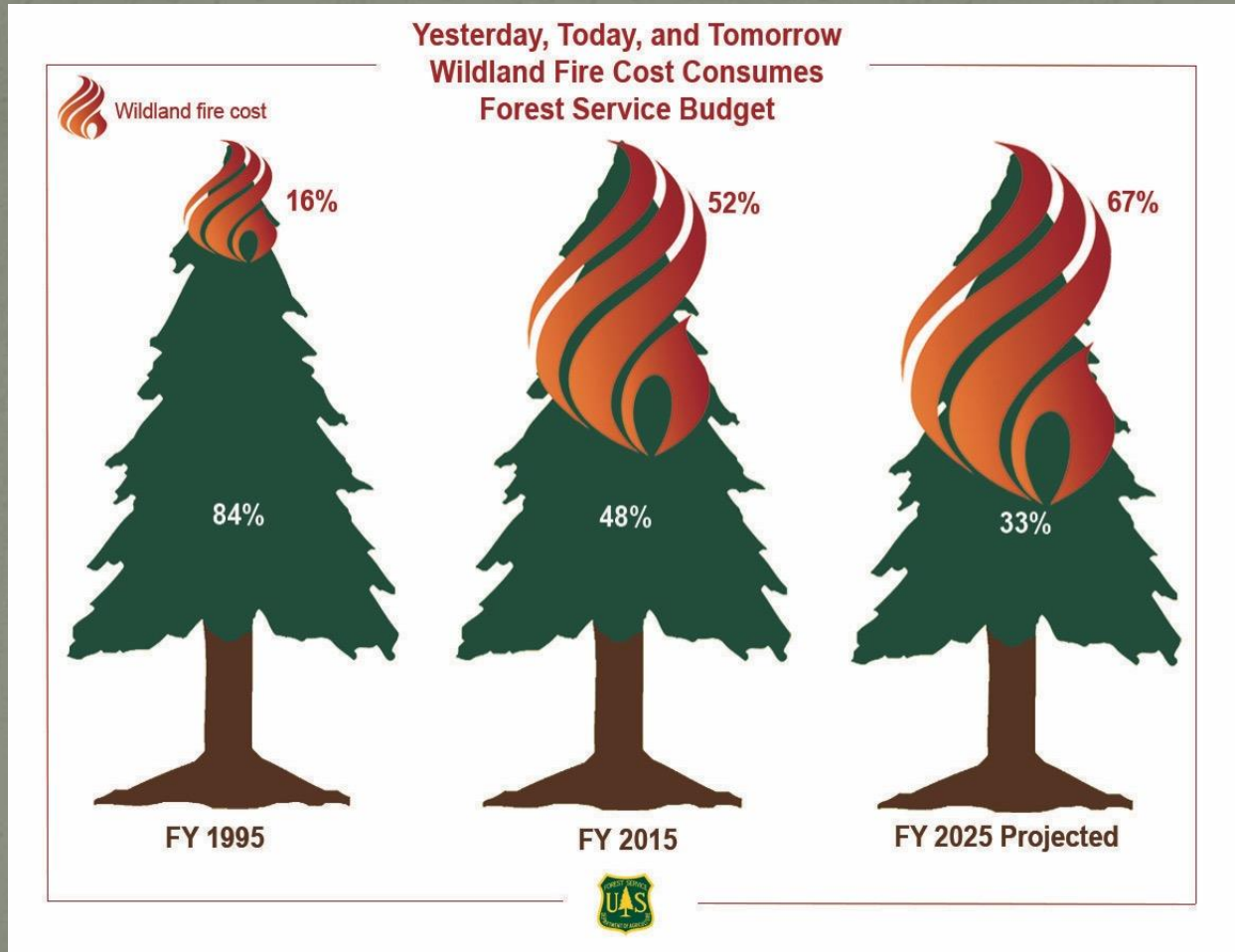
Healthy and Sustainable Forests



Fire readiness and suppression has gone from 20% of the FS budget in 2001 to 52% in 2015. It is not uncommon to spend \$1 million per hour fighting fires.



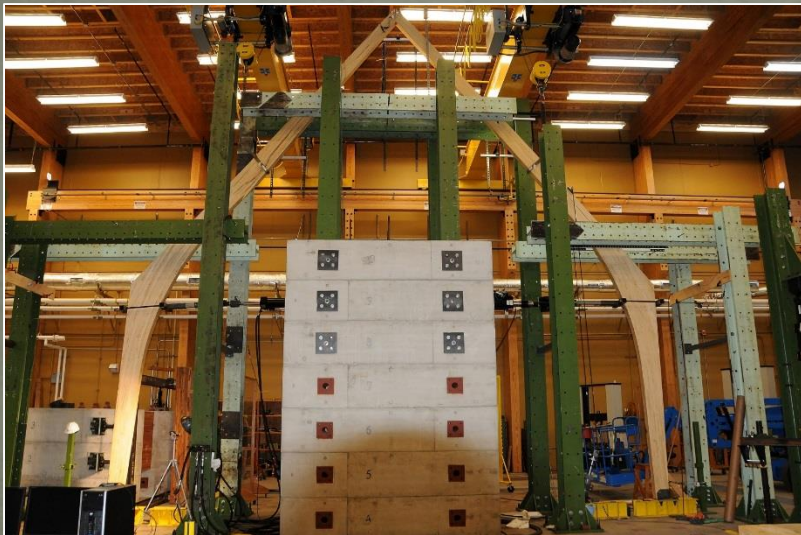
Healthy and Sustainable Forests



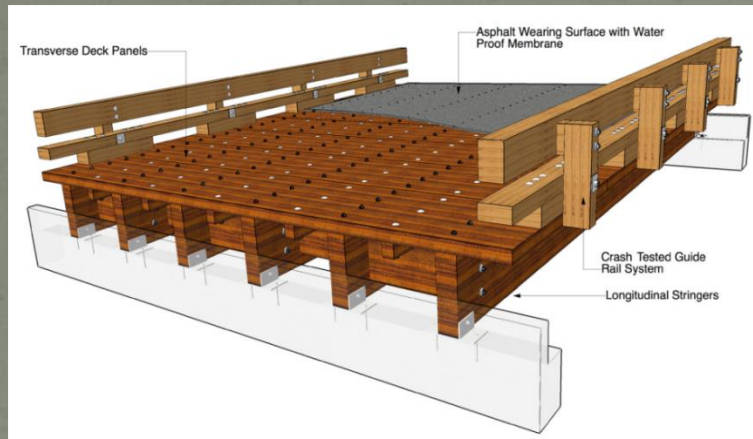
Resource Challenges



Research Scope



Research Scope



Research Scope



ENVIRONMENTAL PRODUCT DECLARATION
NORTH AMERICAN GLUED LAMINATED TIMBERS
AMERICAN WOOD COUNCIL
CANADIAN WOOD COUNCIL



APA - The Engineered Wood Association

The American Wood Council (AWC) and Canadian Wood Council (CWC) are pleased to present this Environmental Product Declaration (EPD) for North American glued laminated timbers (glulam). This EPD was developed in compliance with ISO 14025 and ISO 21930 and has been verified under U.S. Environment's EPD program.

The EPD includes Life Cycle Assessment (LCA) results for all processes up to the point that glulam is packaged and ready for shipment at the manufacturing site. The cradle-to-gate product system includes forest management, logging, transportation of logs to lumber mills, sawing, kiln-drying, transportation of lumber to glulam plants, finger jointing and planing, gluing, and final planing.

The AWC and CWC represent wood product manufacturers across North America. Our organizations have undertaken numerous sustainability initiatives on behalf of our membership and we are pleased to present this document to show how we are doing. The publication of this EPD, which is based on rigorous LCA research, is our effort to back up with science what we know to be true — that wood products stand alone as a green building material.

Please follow our sustainability initiatives at:
www.awc.org and www.cwc.ca



Welcome to FPL

Administrative Announcements:

- Building security
- Restrooms/water
- Lunches and breaks
- Wireless connection
- Parking
- Building evacuation



Welcome to FPL






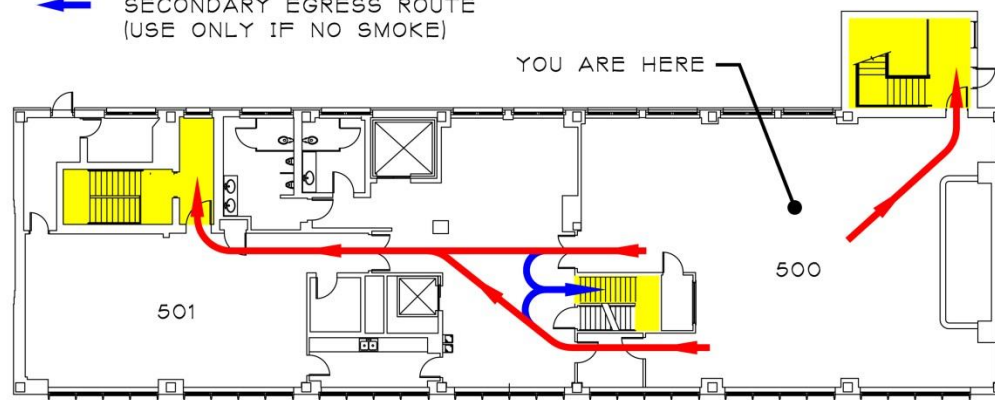
 Areas in red are reserved for UW employees



Welcome to FPL

ROOM 500 EMERGENCY EXIT ROUTES

-  EXIT STAIRS
-  PRIMARY EGRESS ROUTE
-  SECONDARY EGRESS ROUTE
(USE ONLY IF NO SMOKE)



NORTH




BUILDING 1 - FIFTH FLOOR PLAN

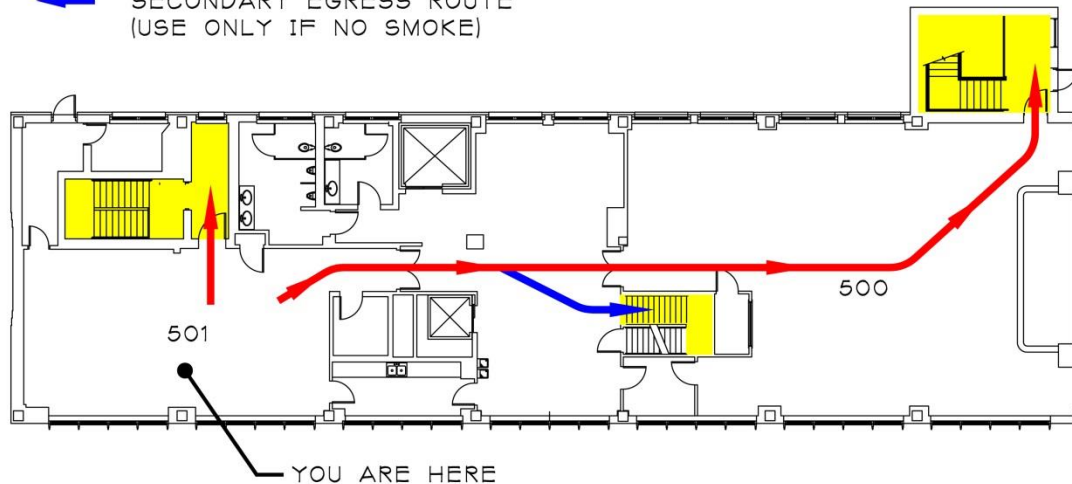
SCALE:



Welcome to FPL

ROOM 501 EMERGENCY EXIT ROUTES

-  EXIT STAIRS
-  PRIMARY EGRESS ROUTE
-  SECONDARY EGRESS ROUTE
(USE ONLY IF NO SMOKE)



BUILDING 1 - FIFTH FLOOR PLAN

SCALE:

