

# *CHARACTERIZING FOREST CHANGE –*

## *A NATIONALLY CONSISTENT DATASET FROM LANDSAT*

Karen Schleeweis, RMRS FIA, Ogden  
[kgschleeweis@fs.fed.us](mailto:kgschleeweis@fs.fed.us)

*a vision*

*moving from  
individual  
research*

*operationalizing  
and producing  
national  
products*

*a vision*

*moving from  
individual  
research*

*operationalizing  
and producing  
national  
products*

North American Forest Dynamics  
Research Project (NAFD)

Science into Applications

What products ?

What role ?

What data management ?

# NAFD: A 25-year History of US Forest Disturbances

## Reducing Spatial and Temporal Uncertainty in Forest Disturbance Estimates for Carbon Science

# North American Forest Dynamics-NASA Earth eXchange (NAFD-NEX) Product

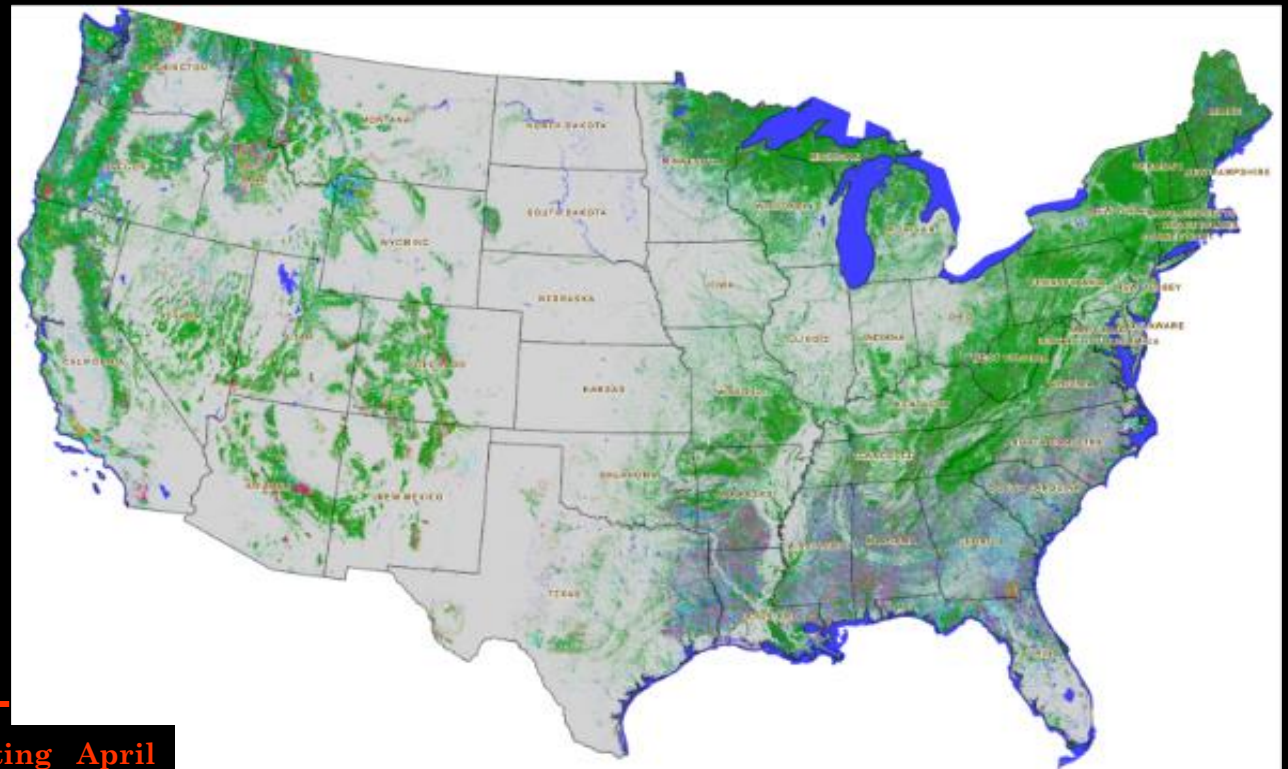
No change classes

- Persisting Nonforest
- Persisting Forest
- Water

## NAFD: A 25-year History of US Forest Disturbances from VCT

Disturbance year classes

- Pre observation
- 1985
- 1986
- 1987
- 1988
- 1989
- 1990
- 1991
- 1992
- 1993
- 1994
- 1995
- 1996
- 1997
- 1998
- 1999
- 2000
- 2001
- 2002
- 2003
- 2004
- 2005
- 2006
- 2007
- 2008
- 2009
- 2010
- 2011



# North American Forest Dynamics-NASA Earth eXchange (NAFD-NEX) Product

No change classes

- Persisting Nonforest
- Persisting Forest
- Water

## NAFD: A 25-year History of US Forest Disturbances from VCT

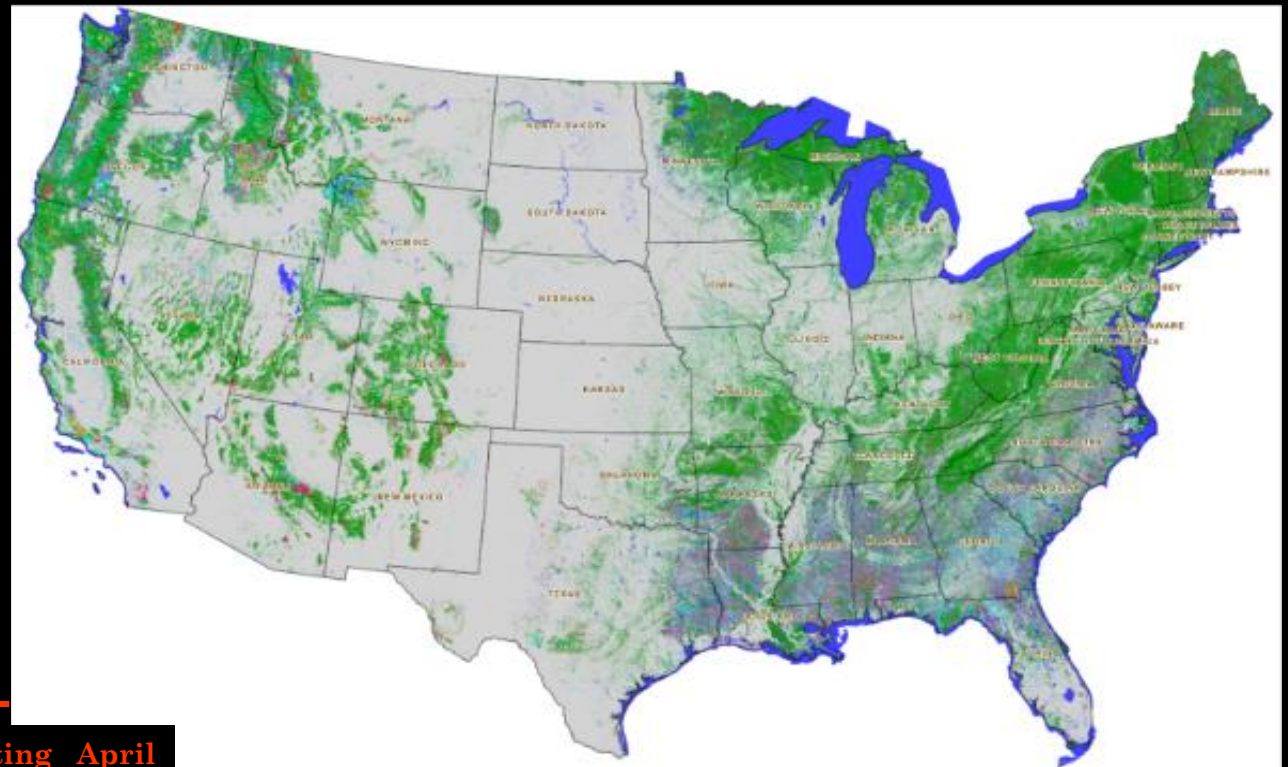
Huang et al. 2010; Goward et al. 2016

Disturbance year classes

- Pre observation
- 1985
- 1986
- 1987
- 1988
- 1989
- 1990
- 1991
- 1992
- 1993
- 1994
- 1995
- 1996
- 1997
- 1998
- 1999
- 2000
- 2001
- 2002
- 2003
- 2004
- 2005
- 2006
- 2007
- 2008
- 2009
- 2010
- 2011

Distributed at ORNL DAAC

[https://daac.ornl.gov/NACP/guides/NAFDNEX\\_Forest\\_Disturbance.html](https://daac.ornl.gov/NACP/guides/NAFDNEX_Forest_Disturbance.html)



# North American Forest Dynamics-NASA Earth eXchange (NAFD-NEX)

No change classes

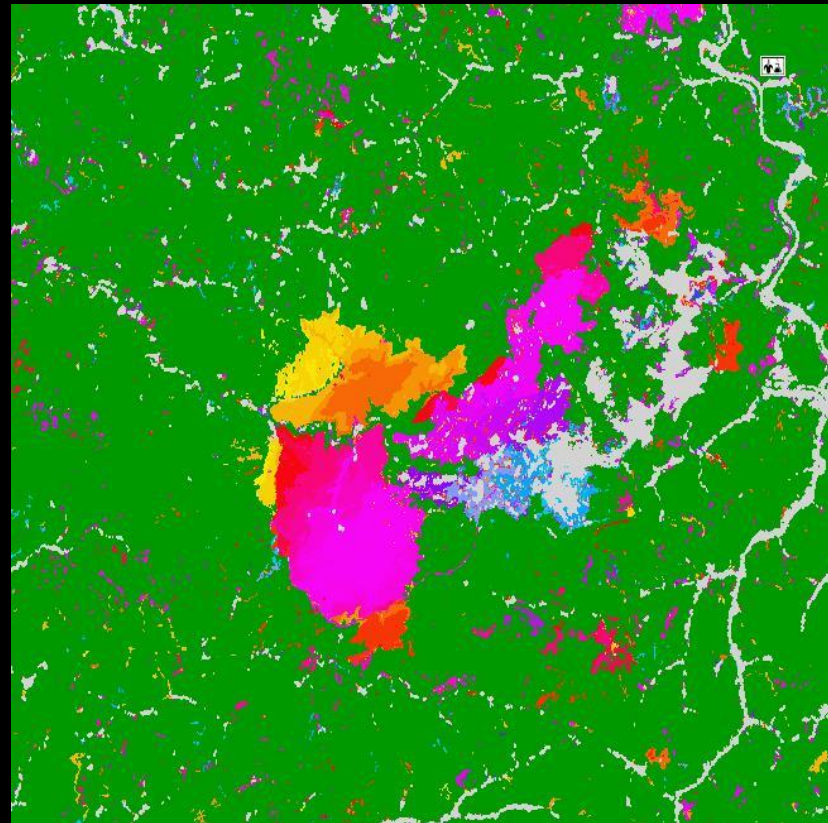
- Persisting Nonforest
- Persisting Forest
- Water

## NAFD: A 25-year History of US Forest Disturbances from VCT

Huang et al. 2010; Goward et al. 2016

Disturbance year classes

- Pre observation
- 1985
- 1986
- 1987
- 1988
- 1989
- 1990
- 1991
- 1992
- 1993
- 1994
- 1995
- 1996
- 1997
- 1998
- 1999
- 2000
- 2001
- 2002
- 2003
- 2004
- 2005
- 2006
- 2007
- 2008
- 2009
- 2010
- 2011



No change classes

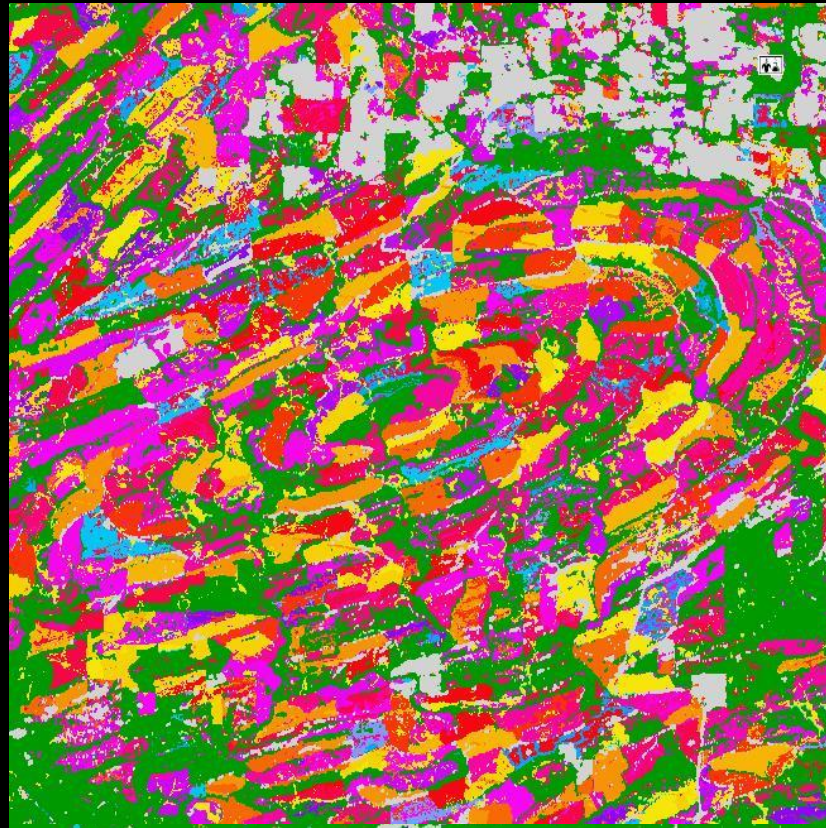
- Persisting Nonforest
- Persisting Forest
- Water

## A 25-year History of US Forest Disturbances from VCT

Huang et al. 2010; Goward et al. 2016

Disturbance year classes

- Pre observation
- 1985
- 1986
- 1987
- 1988
- 1989
- 1990
- 1991
- 1992
- 1993
- 1994
- 1995
- 1996
- 1997
- 1998
- 1999
- 2000
- 2001
- 2002
- 2003
- 2004
- 2005
- 2006
- 2007
- 2008
- 2009
- 2010
- 2011





No change classes

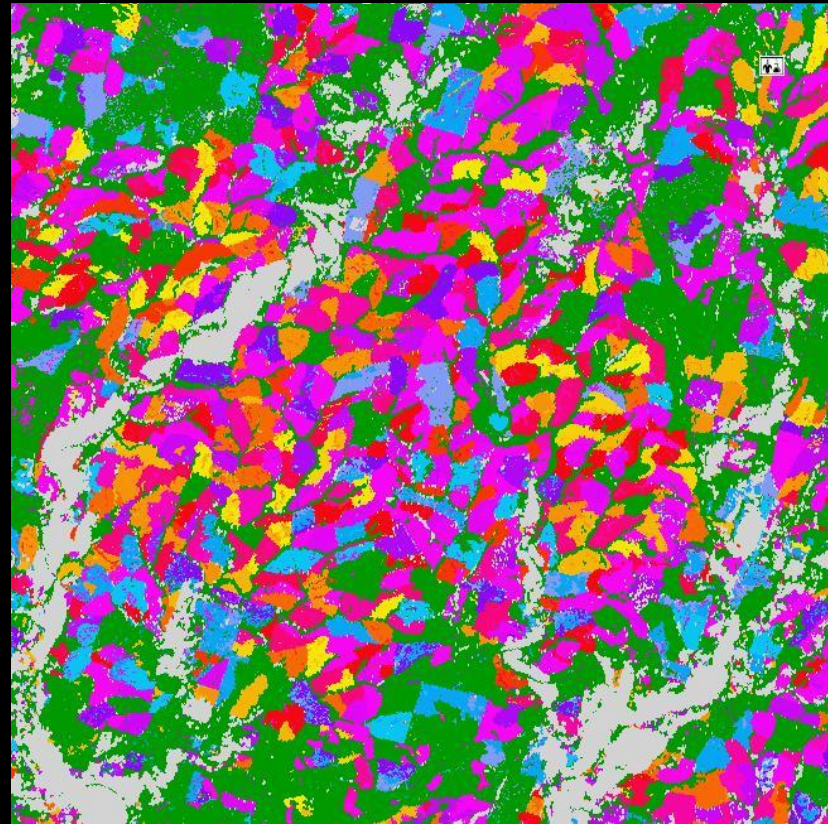
- Persisting Nonforest
- Persisting Forest
- Water

## A 25-year History of US Forest Disturbances from VCT

Huang et al. 2010; Goward et al. 2016

Disturbance year classes

- Pre observation
- 1985
- 1986
- 1987
- 1988
- 1989
- 1990
- 1991
- 1992
- 1993
- 1994
- 1995
- 1996
- 1997
- 1998
- 1999
- 2000
- 2001
- 2002
- 2003
- 2004
- 2005
- 2006
- 2007
- 2008
- 2009
- 2010
- 2011



No change classes

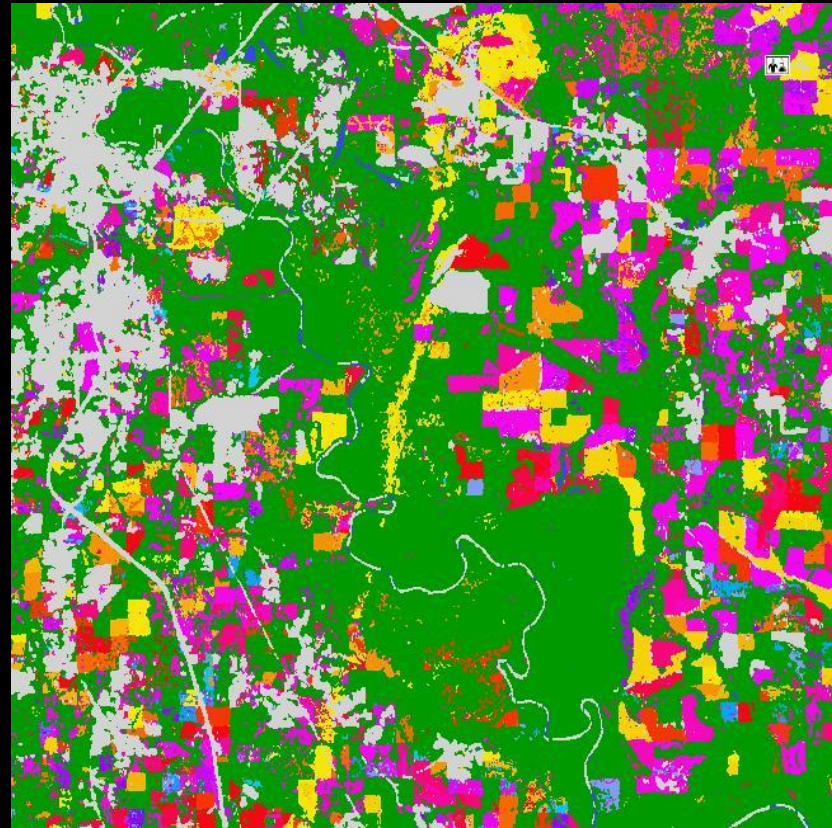
- Persisting Nonforest
- Persisting Forest
- Water

## A 25-year History of US Forest Disturbances from VCT

Huang et al. 2010; Goward et al. 2016

Disturbance year classes

- Pre observation
- 1985
- 1986
- 1987
- 1988
- 1989
- 1990
- 1991
- 1992
- 1993
- 1994
- 1995
- 1996
- 1997
- 1998
- 1999
- 2000
- 2001
- 2002
- 2003
- 2004
- 2005
- 2006
- 2007
- 2008
- 2009
- 2010
- 2011



No change classes

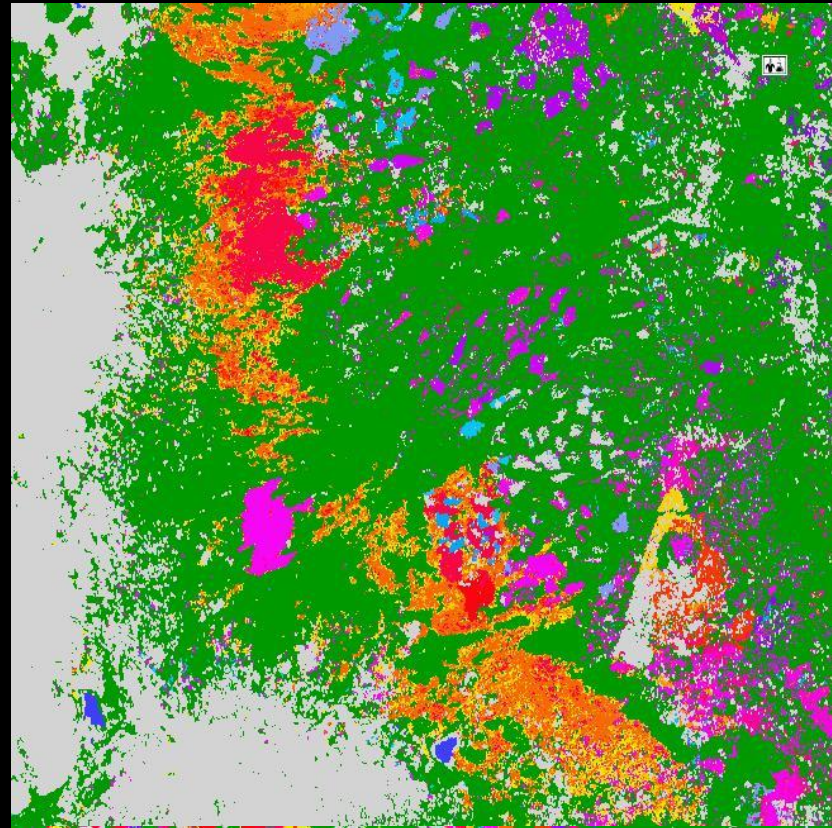
- Persisting Nonforest
- Persisting Forest
- Water

## A 25-year History of US Forest Disturbances from VCT

Huang et al. 2010; Goward et al. 2016

Disturbance year classes

- Pre observation
- 1985
- 1986
- 1987
- 1988
- 1989
- 1990
- 1991
- 1992
- 1993
- 1994
- 1995
- 1996
- 1997
- 1998
- 1999
- 2000
- 2001
- 2002
- 2003
- 2004
- 2005
- 2006
- 2007
- 2008
- 2009
- 2010
- 2011



No change classes

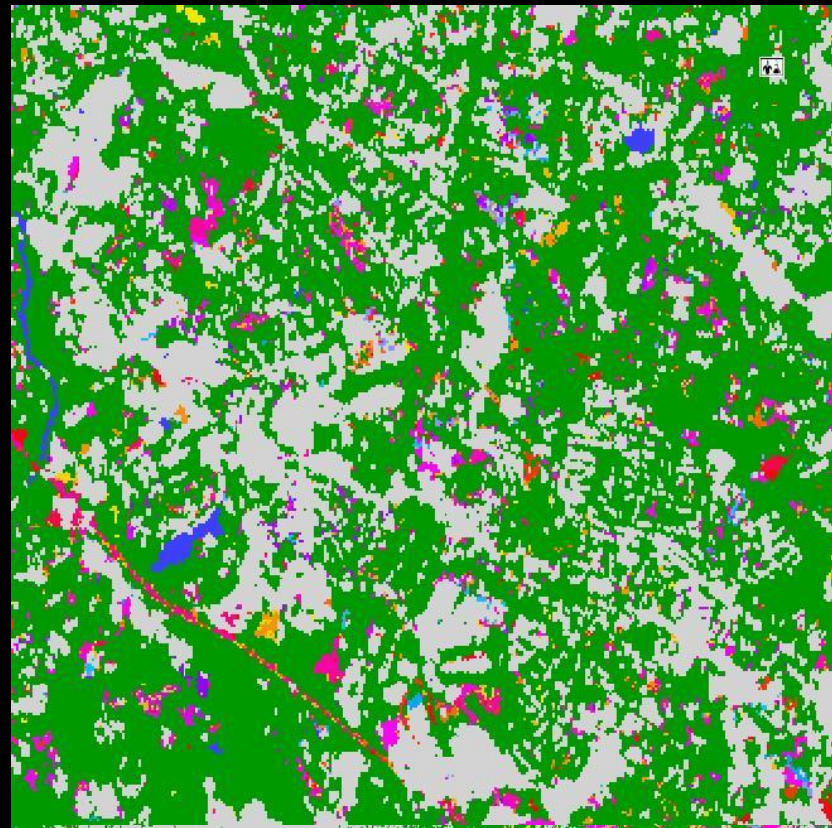
- Persisting Nonforest
- Persisting Forest
- Water

## A 25-year History of US Forest Disturbances from VCT

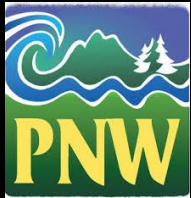
Huang et al. 2010; Goward et al. 2016

Disturbance year classes

- Pre observation
- 1985
- 1986
- 1987
- 1988
- 1989
- 1990
- 1991
- 1992
- 1993
- 1994
- 1995
- 1996
- 1997
- 1998
- 1999
- 2000
- 2001
- 2002
- 2003
- 2004
- 2005
- 2006
- 2007
- 2008
- 2009
- 2010
- 2011



# “Valued Collaboration” “Strengthening Connections”



North  
American  
Carbon  
Program



# *Mapping Forest History from Landsat*

## *North American Forest Dynamics Research Project (NAFD)*

<i>Space</i>	<i>Time Record</i>	<i>Project Name</i>	<i>yrs of funding</i>	<i>USFS</i>	<i>Ref</i>	<b>FIA Collaboration</b>					



# *Mapping Forest History from Landsat*

## *North American Forest Dynamics Research Project (NAFD)*

<i>Space</i>	<i>Time Record</i>	<i>Project Name</i>	<i>Yrs of funding</i>	<i>USFS</i>	<i>Ref</i>	<i>FIA Collaboration</i>					
3 P/R	84-00	NAFD pilot	03-05	Lister, Moisen,	-	Disturbance Year Accuracy and Assessment					



# *Mapping Forest History from Landsat*

## *North American Forest Dynamics Research Project (NAFD)*

Space	Time Record	Project Name	Yrs of funding	USFS	Ref	FIA Collaboration					
3 P/R	84-00	NAFD pilot	03-05	Lister, Moisen,	-	<ul style="list-style-type: none"> <li>• Disturbance Year Accuracy and Assessment</li> <li>• Training for Biomass Trajectories</li> </ul>					
23 P/R	84-06	NAFD P I	05-08	Moisen, Cohen, Healey, Schroeder, Powell	-						
25 P/R	84-06	NAFD PII	08-11	Moisen, Cohen, Healey, Schroeder, Powell, Nelson	Goward 2008, Stueve et al 2011, Huang et al 2011						







# Mapping Forest History from Landsat

## North American Forest Dynamics Research Project (NAFD)

Space	Time Record	Project Name	yrs of funding	USFS	Ref	FIA Collaboration
3 P/R	84-00	NAFD pilot	03-05	Lister, Moisen	-	
23 P/R	84-06	NAFD P I	05-08	Moisen, Cohen, Healey, Schroeder, Powell	-	
25 P/R	84-06	NAFD PII	08-11	Moisen, Cohen, Healey, Schroeder, Powell, Nelson	Goward 2008, Stueve et al 2011, Huang et al 2011	
CONUS (434/PR)	84-10	NAFD-NEX	11-14	Mosien, Cohen, Schleeweis, Schroeder, Toney, Frescino, Freeman	Masek 2011, Schleeweis 2013, Goward 2016, Cohen 2016, Schleeweis 2016, Schroeder 2017, Zhoa ( In Review)	<ul style="list-style-type: none"> <li>• Accuracy and Assessment (Year)</li> <li>• Training Data</li> <li>• Calibrate Spectral thresholds for Forest detection</li> <li>• Improved Estimation of Disturbed area from FIA</li> </ul>
CONUS (443/PR)	84-16	NAFC	14-17	Moisen, Schleeweis, Toney		<ul style="list-style-type: none"> <li>• Training Data</li> </ul>

*a vision*

*moving from  
research  
projects*

*operationalizing  
and producing  
national  
products*

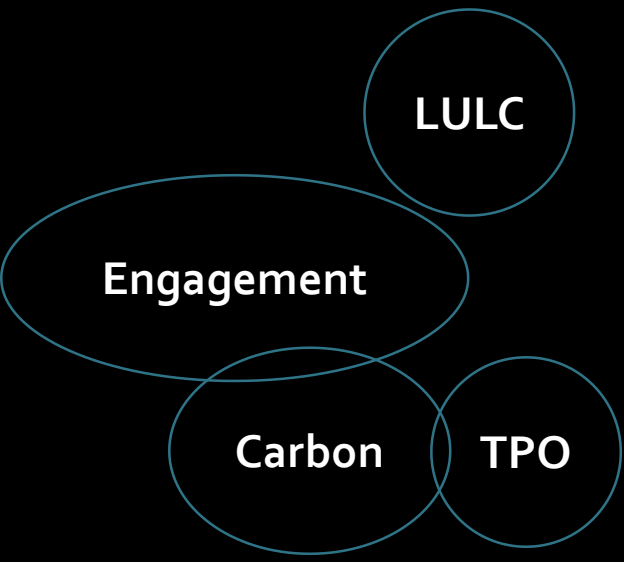
North American Forest Dynamics  
Research Project (NAFD)

***Science into Applications***

What products ?

What role ?

What data management ?



- Attribution
- Severity
- Sequence (Frequency with type)
- Regrowth
- Duration

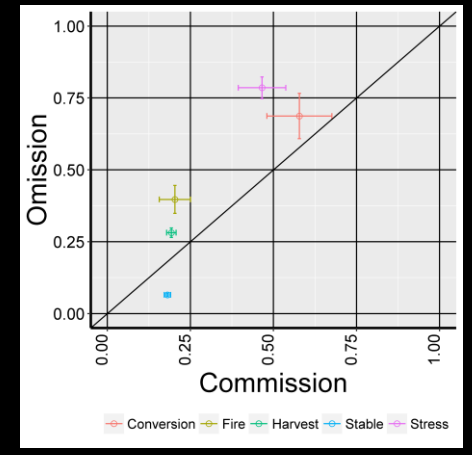
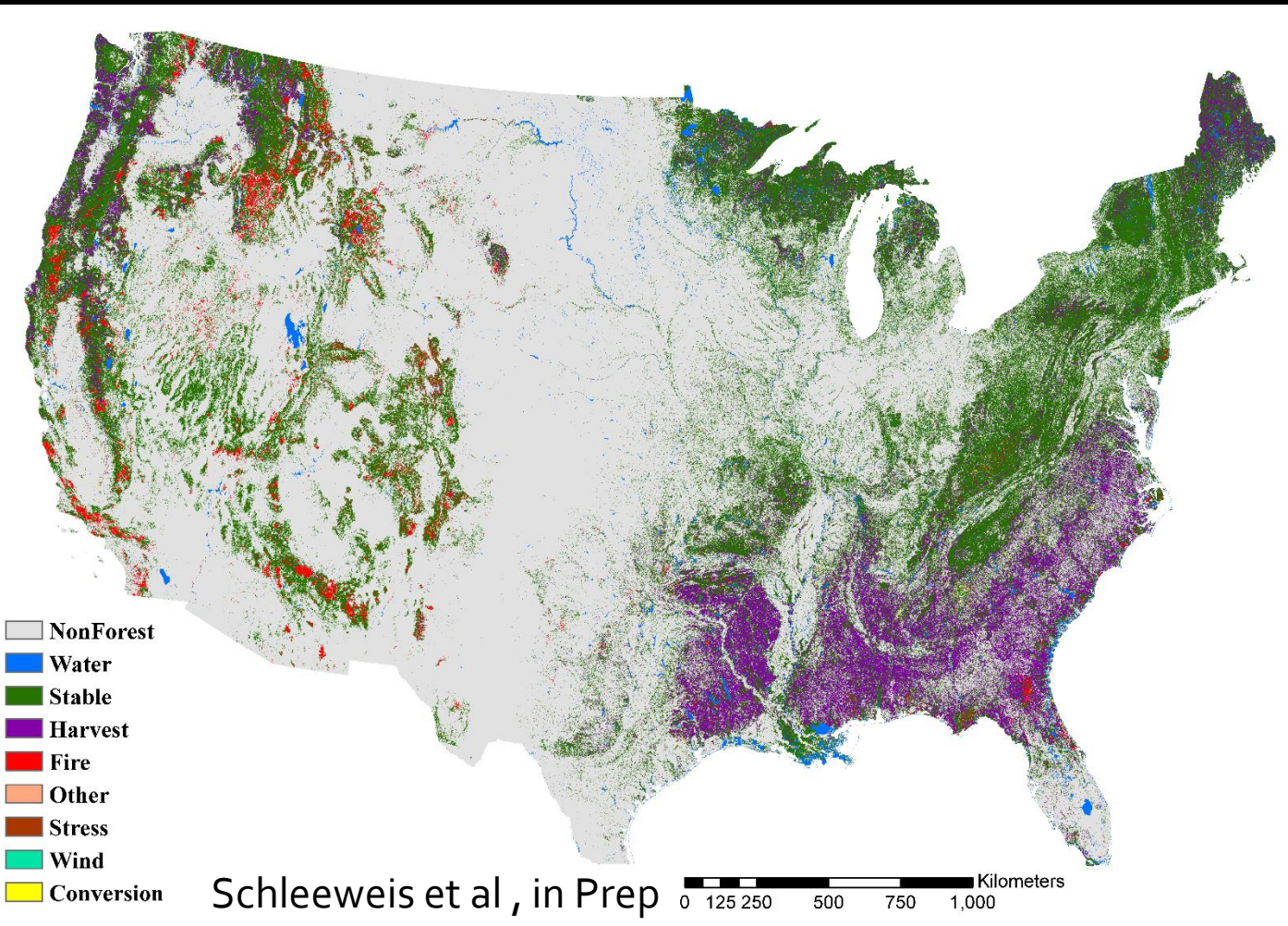
# Frontiers in Ecology and the Environment

Bringing an ecological view of change to  
Landsat-based remote sensing

Robert E Kennedy, Serge Andréfouët, Warren B Cohen, Cristina Gómez, Patrick Griffiths,  
Martin Hais, Sean P Healey, Eileen H Helmer, Patrick Hostert, Mitchell B Lyons, Garrett W Meigs,

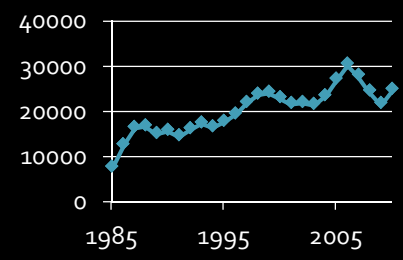


# Mapping Disturbance Attribution



of all Forest Land	Activity	of all Loss
70.70%	Stable	
<b>21.93%</b>	Harvest	<b>74.84%</b>
4.68%	Fire	15.96%
0.01%	Other	0.04%
2.06%	Stress	7.01%
0.00%	Wind	0.01%
0.62%	Conversion	2.13%

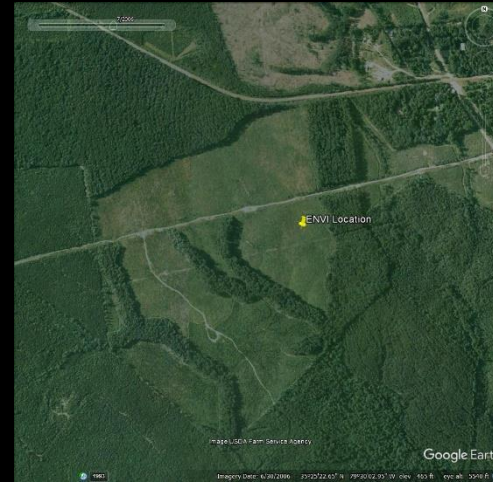
Year & Duration  
within 2 weeks



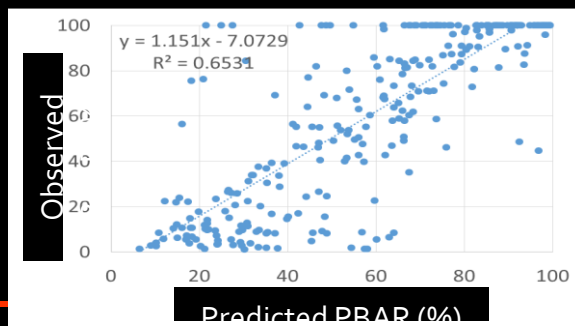
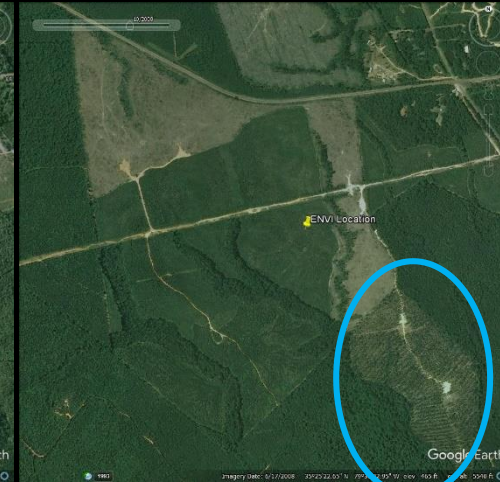
# Mapping of Disturbance Severity (NAFD)

Percent basal area  
removal (PBAR)  
correlated with spectral  
changes  
T<sub>1</sub> to T<sub>2</sub> using tree level  
dbh from plots

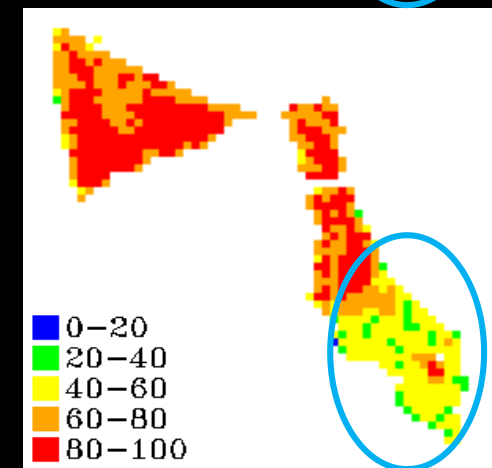
July 2006



October 2008

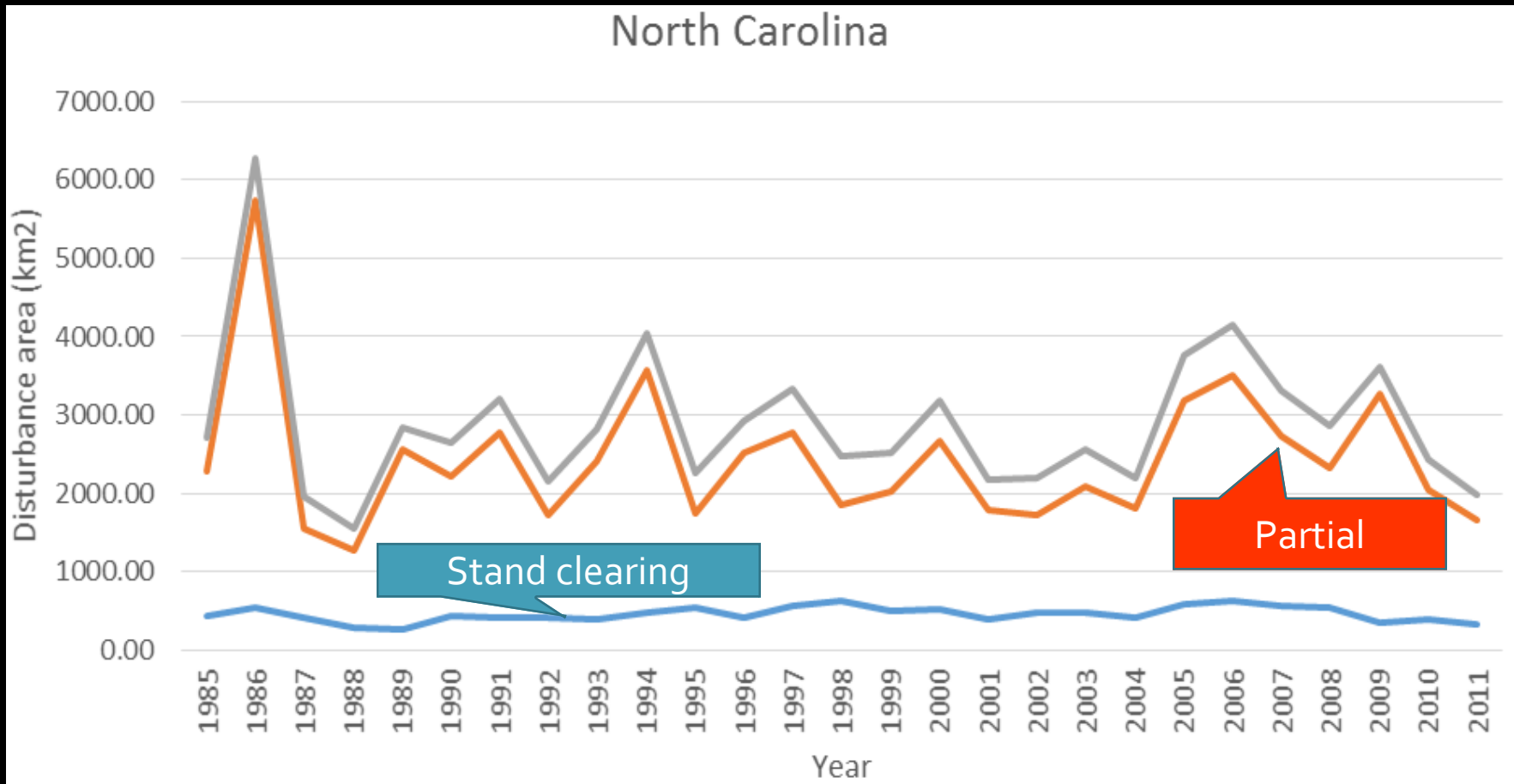


(Tao, Huang et al., in prep)

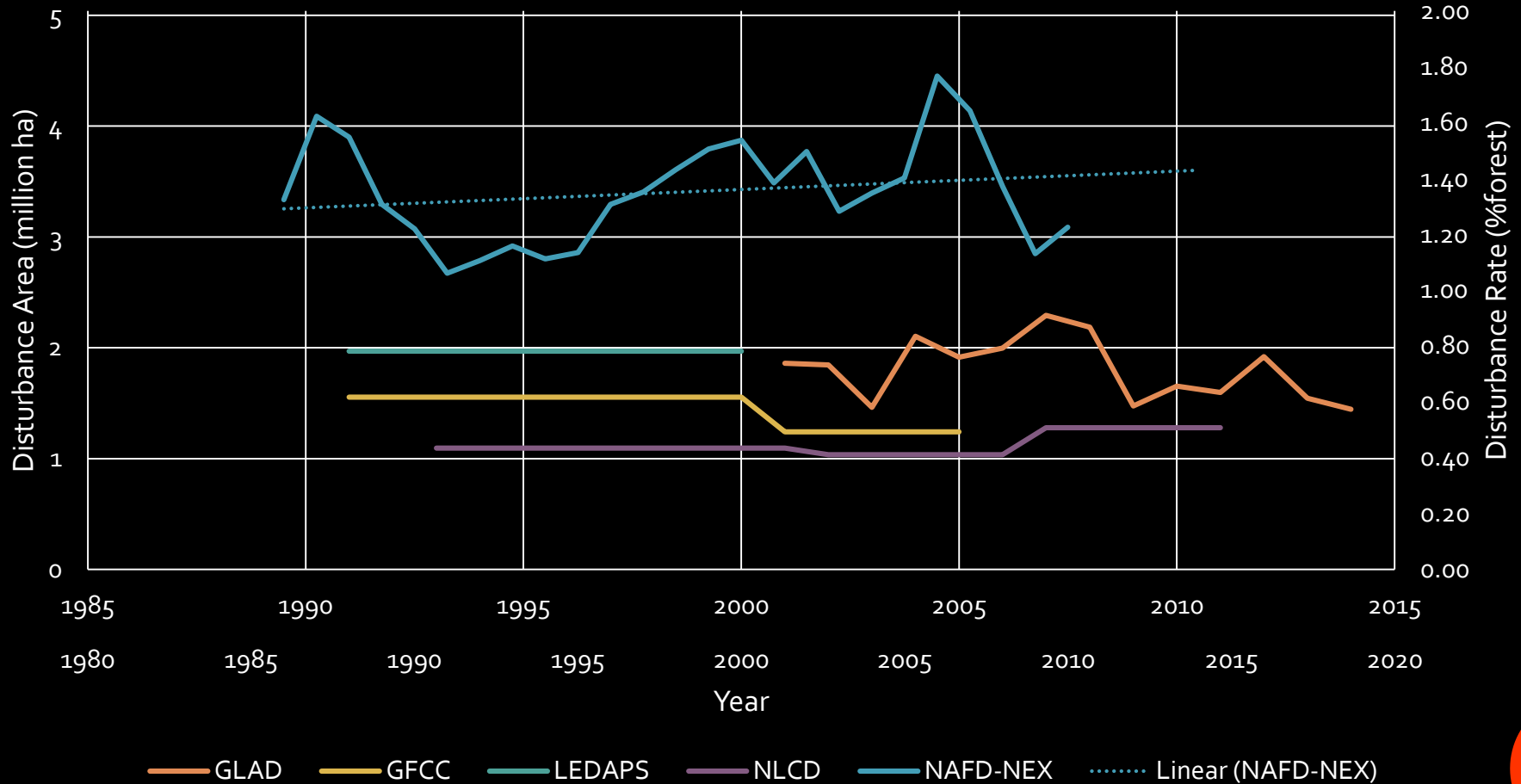


Mapped PBAR

# Most Disturbances in NC Partial Cuts (NAFD)



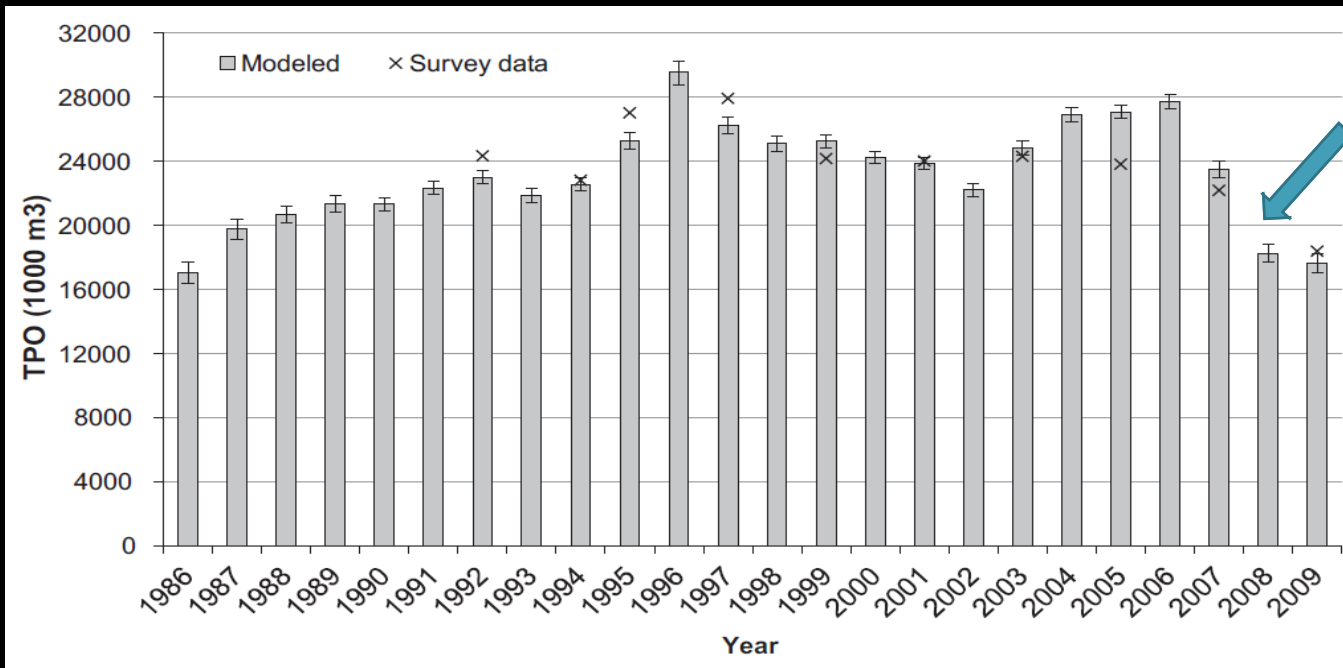
# National Disturbance Rates, CONUS





# North Carolina's Timber Harvest History Mapped Using Time Series Landsat Observations and Inventory Data

<sup>1</sup> Department of Geographical Sciences, University of Maryland; <sup>2</sup> USDA Forest Service, Rocky Mountain Research Station; <sup>3</sup> NASA Ames Research Center; <sup>4</sup> NASA Goddard Space Flight Center



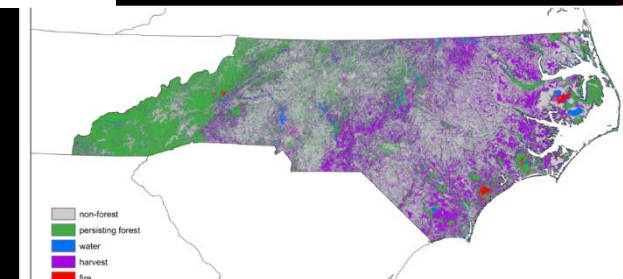
Sharp economic downturn

Average annual TPO:  
23.2 million m<sup>3</sup>

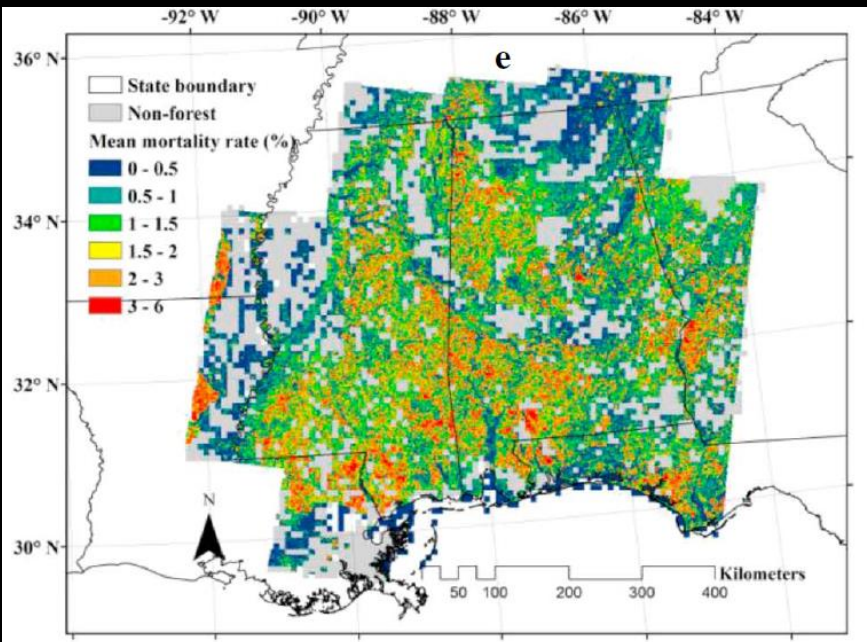
TPO per unit harvested forest area:  
~200 m<sup>3</sup>/ha

**“We need area and cubic feet...”**

2017 FIA User Group Meeting April  
4th & 5th Madison, WI



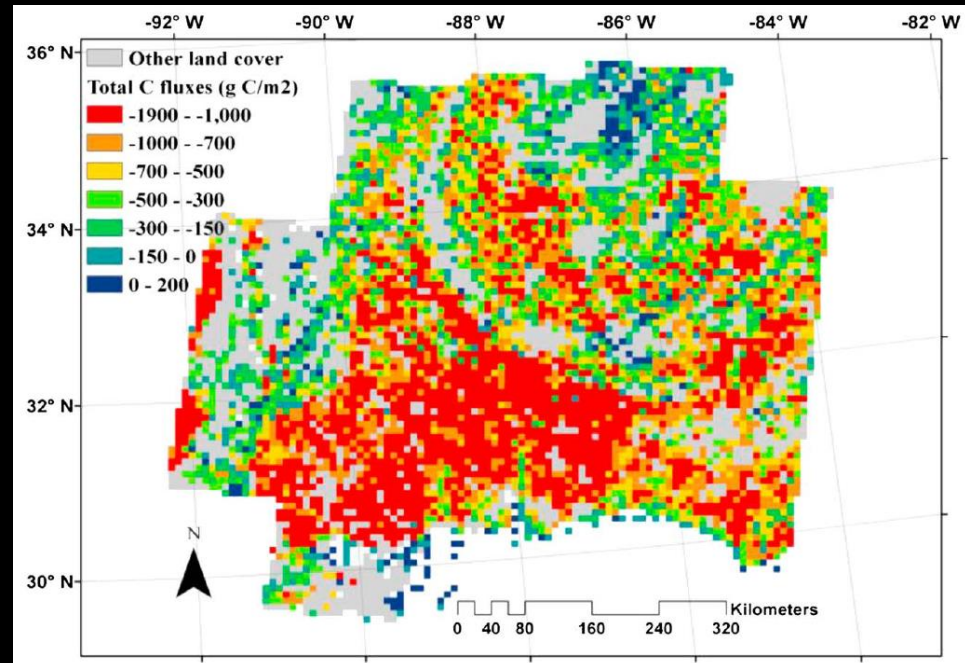
# Use of NAFD Products for C Modeling



NAFD Disturbance Products

Other Data  
Products

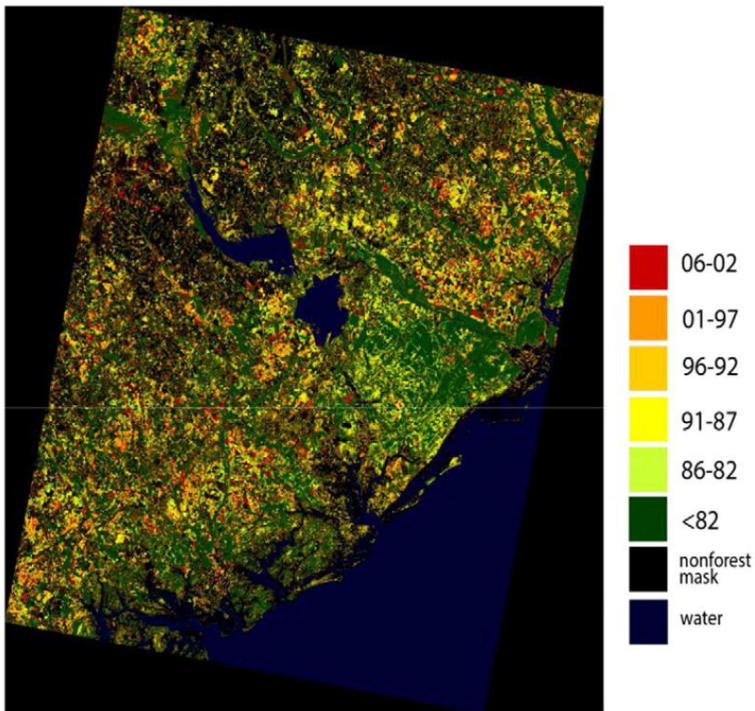
DLEM Model



# Use of NAFD Products for C Modeling

## NAFD Disturbance Products

Year of Disturbance



(Williams et al. 2012, 2014)

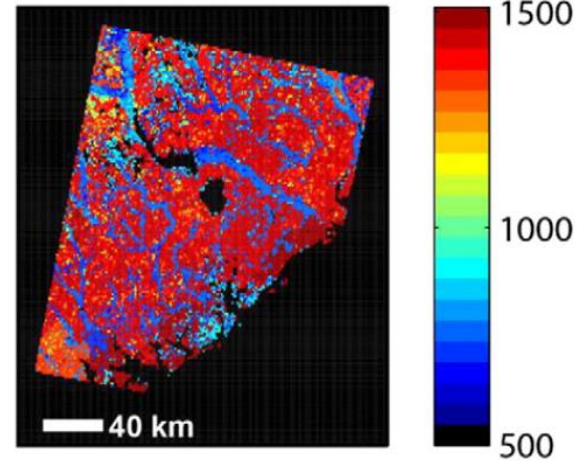


Modified  
CASA Model

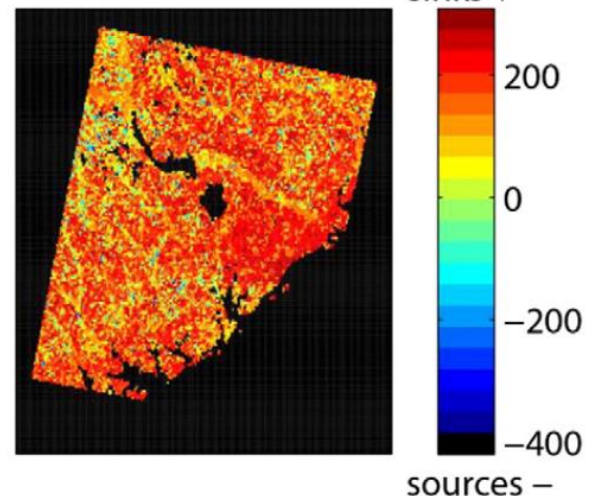


Other Data  
Products

Forest NPP [ $\text{gC m}^{-2} \text{a}^{-1}$ ]



Forest NEP [ $\text{gC m}^{-2} \text{a}^{-1}$ ]



*DO YOU WANT TO  
USE THIS DATA?*

*kgschleeweis@fs.fed.us*

*a vision*

*moving from  
research  
projects*

*operationalizing  
and producing  
national  
products*

North American Forest Dynamics  
Research Project (NAFD)

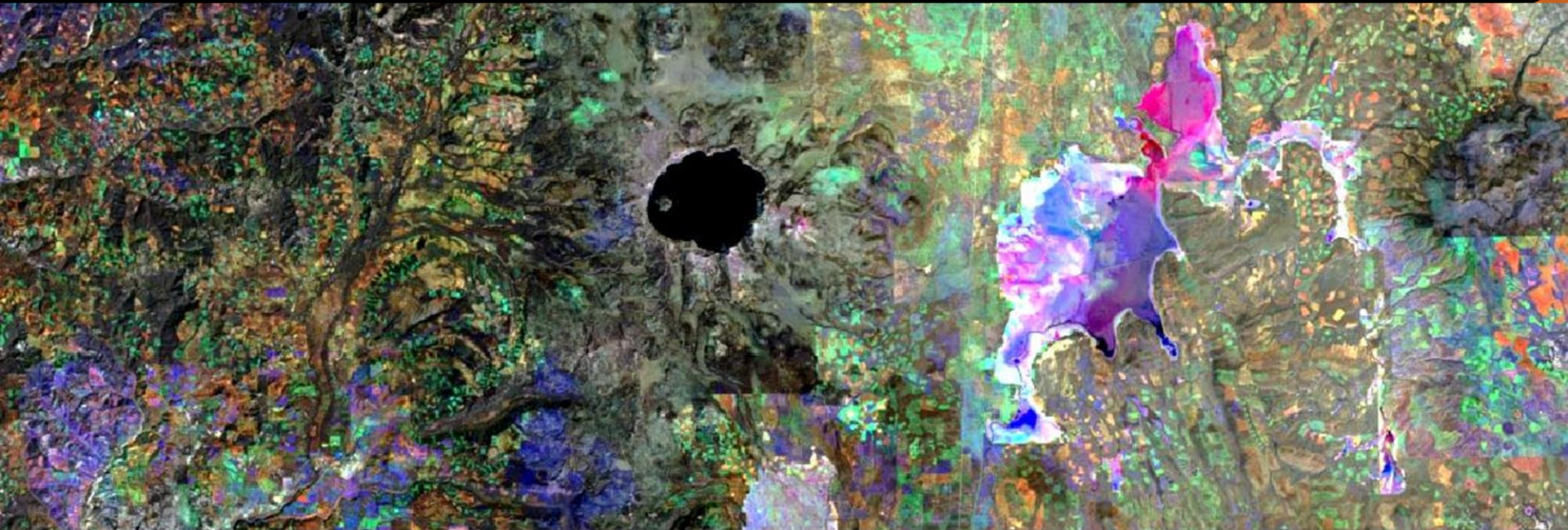
Science into Applications

*Which products ? What is FIA's role?*

*Data management for producing  
and serving national products ?*

# *LANDSCAPE CHANGE MONITORING SYSTEM*

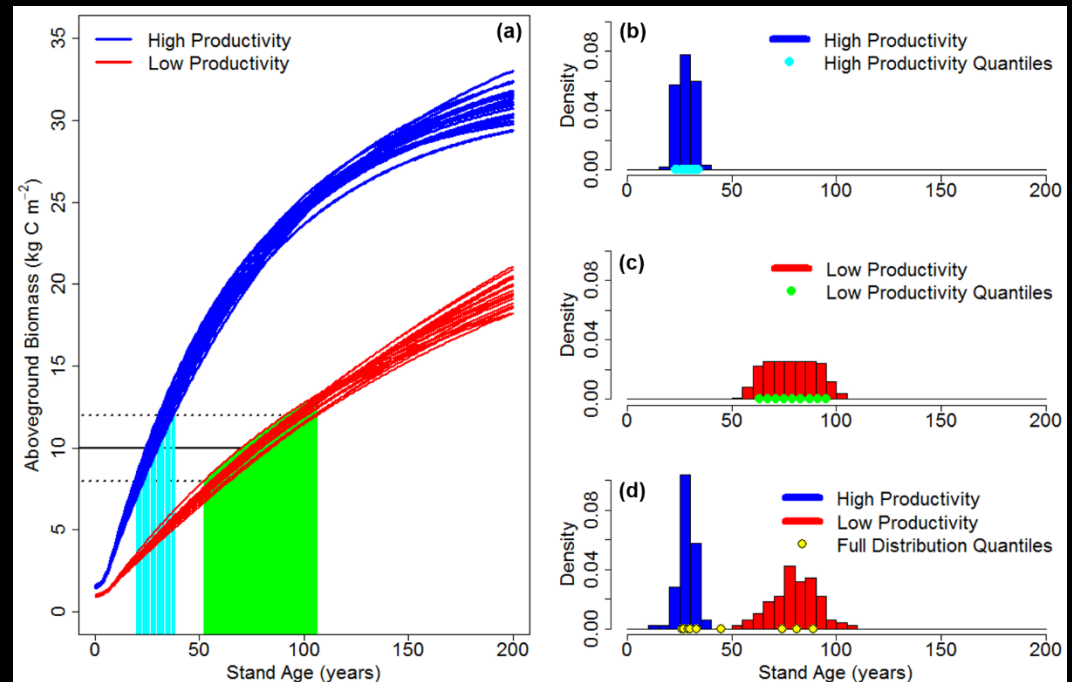
## *(LCMS):*



United States Department of Agriculture Forest Service (USFS)  
United States Geological Survey (USGS)  
USFS GeoTasc ,Boston University, University of Maryland  
Oregon State University, State University of New York (SUNY)

# What Products? What Role?

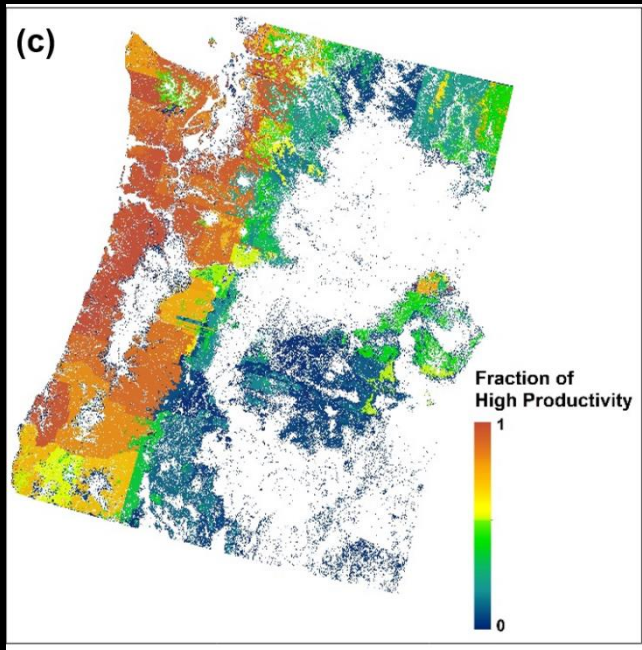
## Inferring 30m Stand Age from FIA-derived Biomass Curves



Gu, H., Williams, C. A., Ghimire, B., Zhao, F., and Huang, C.: High-resolution mapping of time since disturbance and forest carbon flux from remote sensing and inventory data to assess harvest, fire, and beetle disturbance legacies in the Pacific Northwest, *Biogeosciences*, 13, 6321-6337, doi:10.5194/bg-13-6321-2016, 2016.

# *What Products? What Role?*

*Site productivity*



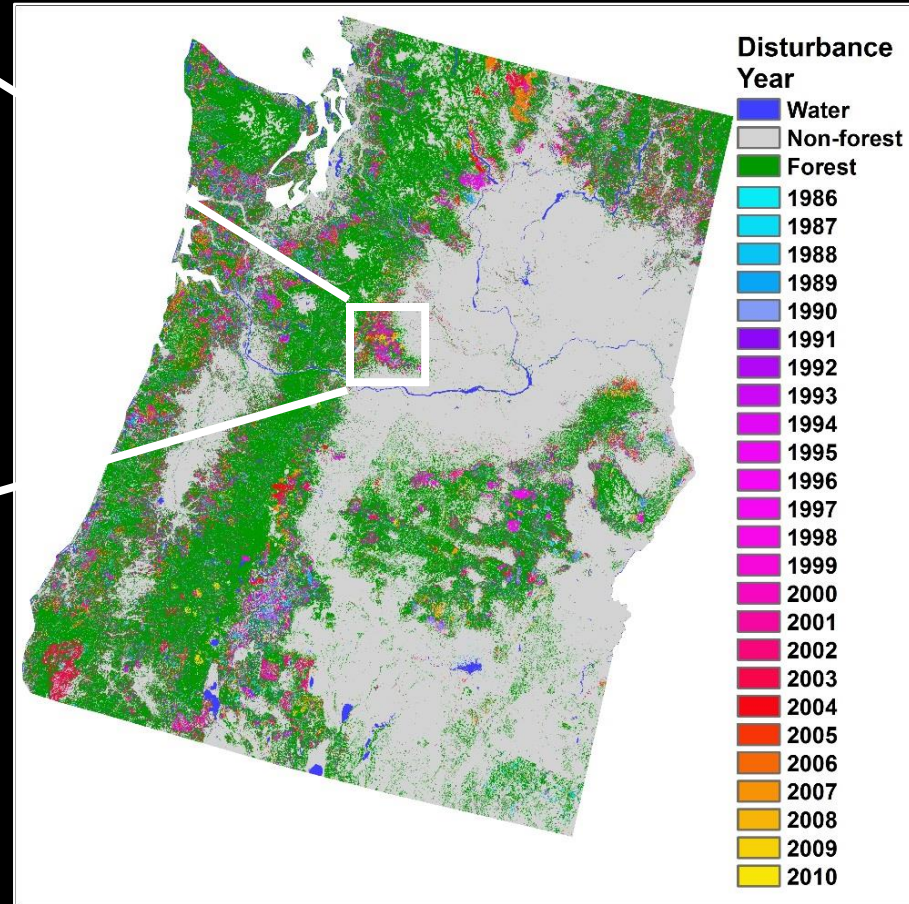
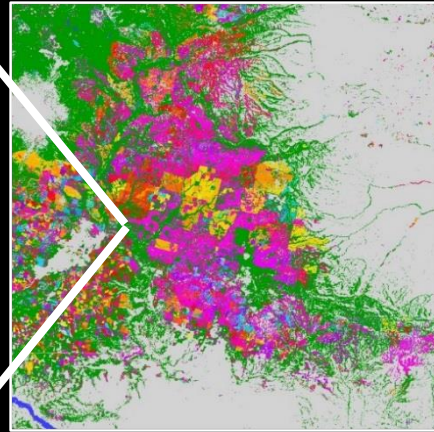
- Vetting ?
- Serving ?
- Convergence is good –
- Multiple research projects is good

CMS - Williams et al.



# Maps from FIA-constrained Data

30m Pixel  
Attributes:  
Pre-D Biomass  
Forest Type  
Site Productivity  
Stand Age (Years  
Post-D)  
Disturbance Type  
Disturbance Severity



CMS - Williams et al.

# *What Products? What Role? Path to Engagement ?*

- Nationally consistent geospatial data sets
- Which products are ready for engagement?
  - Message?
  - Serving Data
    - Internally & Externally?
- What products do you want?

**Biomass**

**LAI for hydrologists**

*What Products? What Role? Path to Engagement ?*

*An efficient geospatial Processing Platform?*

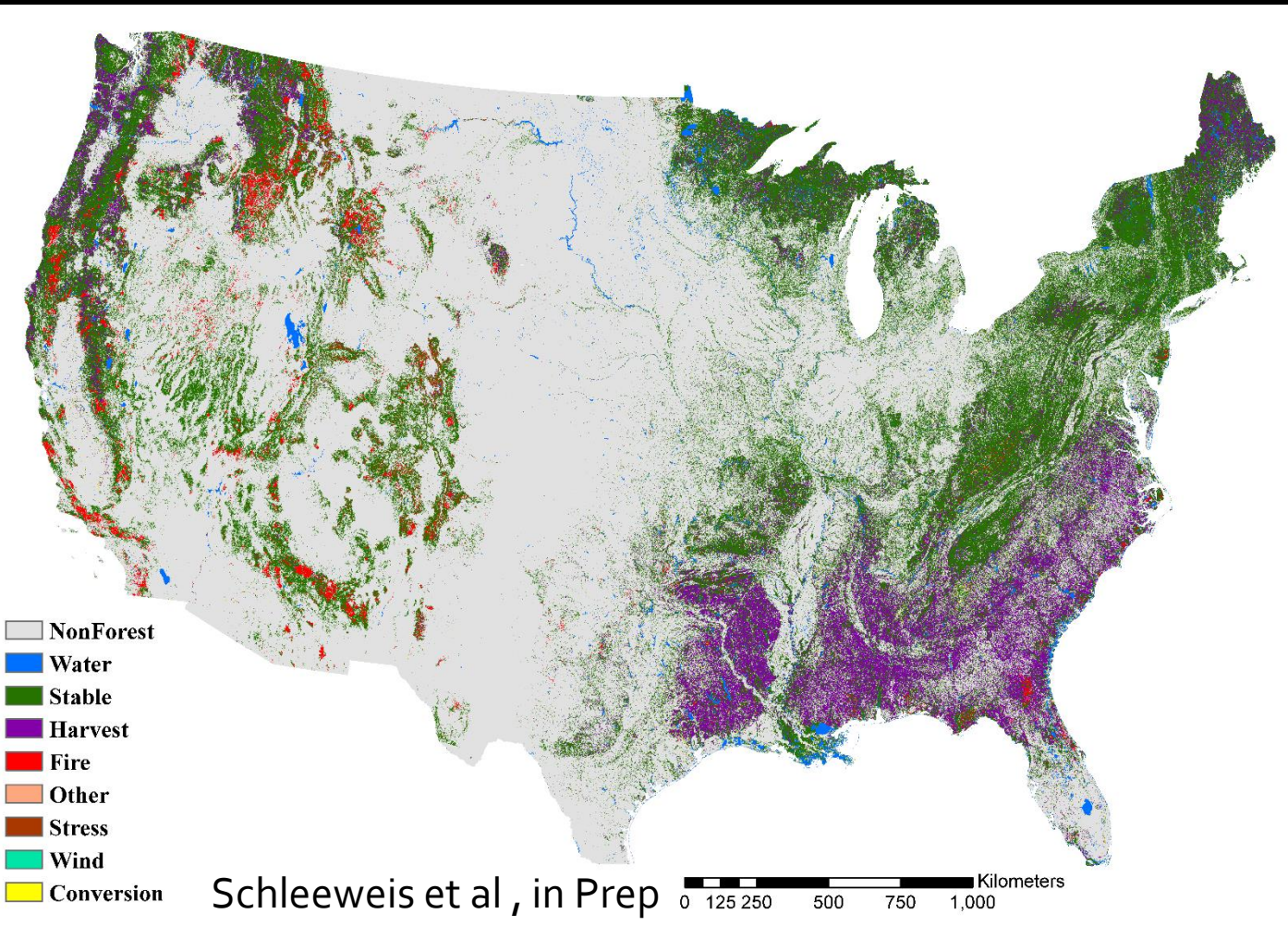
- *Massive Raster Processing ?*
- *AGOL? Image Services*

*An efficient geospatial data gateway for users?*

- *Geospatial data clearinghouse &*
- *Raster data Warehouse...*

***R & D***

***Operational Products based on repeatable science, experimenting multiple methods***



*THANK YOU*

# Major Landsat Based Map Products on Forest Disturbances

Data Set	Spatial Coverage	Temporal Characteristics	References
<b>Products at 5-10 year intervals</b>			
<b>LEDAPS</b>	US and Canada	1990-2000	(Masek et al. 2008)
<b>GFCC</b>	Global	1990-2000 2000-2005	(Sexton et al. 2013, 2015; Kim et al. 2015)
<b>NLCD</b>	US	1992-2001 2001-2006 2006-2011	(Vogelmann et al. 2001; Homer et al. 2004, 2015; Fry et al. 2011)
<b>Annual products</b>			
<b>NAFD-NEX</b>	CONUS	Annual, 1986-2010	(Huang et al. 2010; Goward et al. 2016)
<b>NTEMS</b>	Canada	Annual, 1984-2011	(Hermosilla et al. 2014)
<b>GLAD</b>	Global	Annual, 2000-2014	(Hansen et al. 2013)

GLAD: Global Land Analysis and Discovery, UMD

NAFD-NEX: North American Forest Dynamics-NASA Earth eXchange, UMD-AMES-GSFC-USFS

NTEMS: National Terrestrial Ecosystem Monitoring System, CFS-UBC

GFCC: Global Forest Cover Change, UMD-GSFC

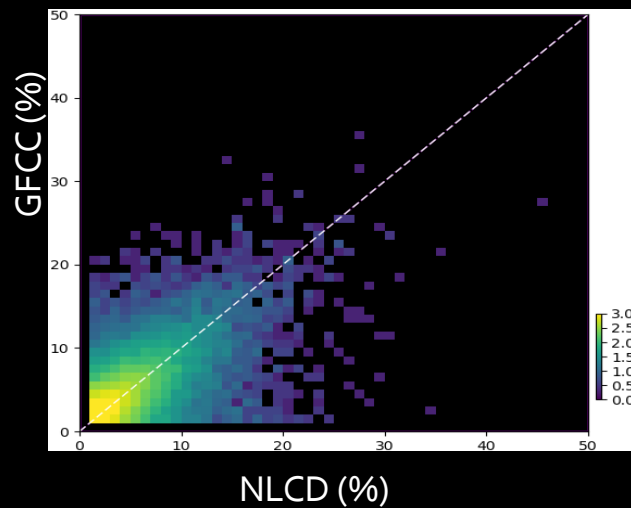
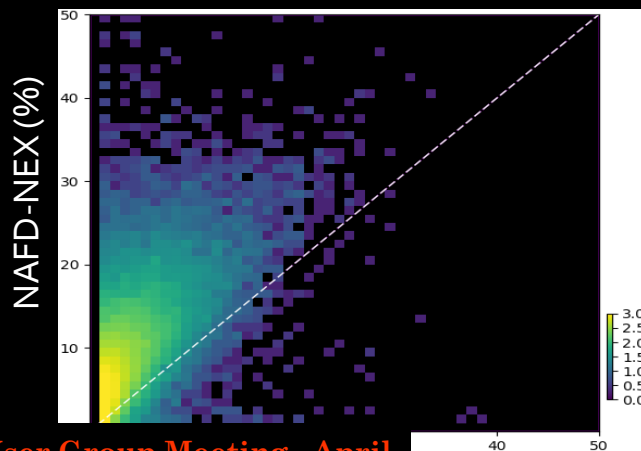
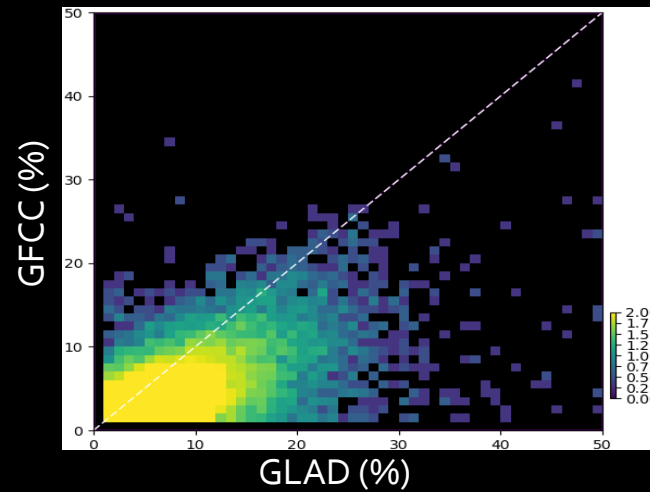
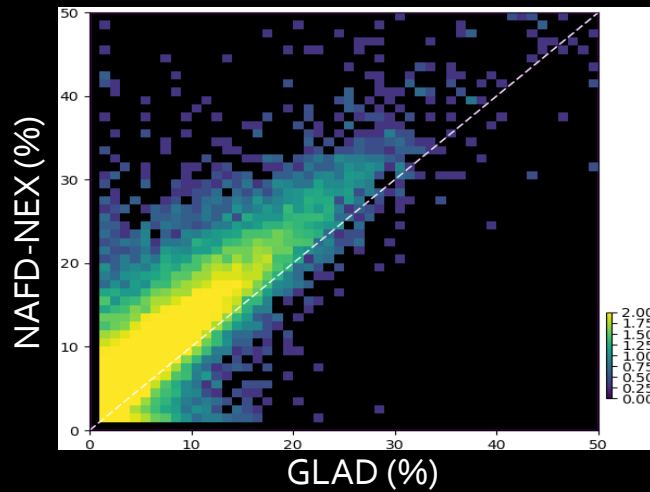
LEDAPS: Landsat Ecosystem Disturbance Adaptive Processing System, GSFC-UMD

NLCD: National Land Cover Dataset, USGS-MRLC

*2017 FIA User Group Meeting April  
4th & 5th Madison, WI*

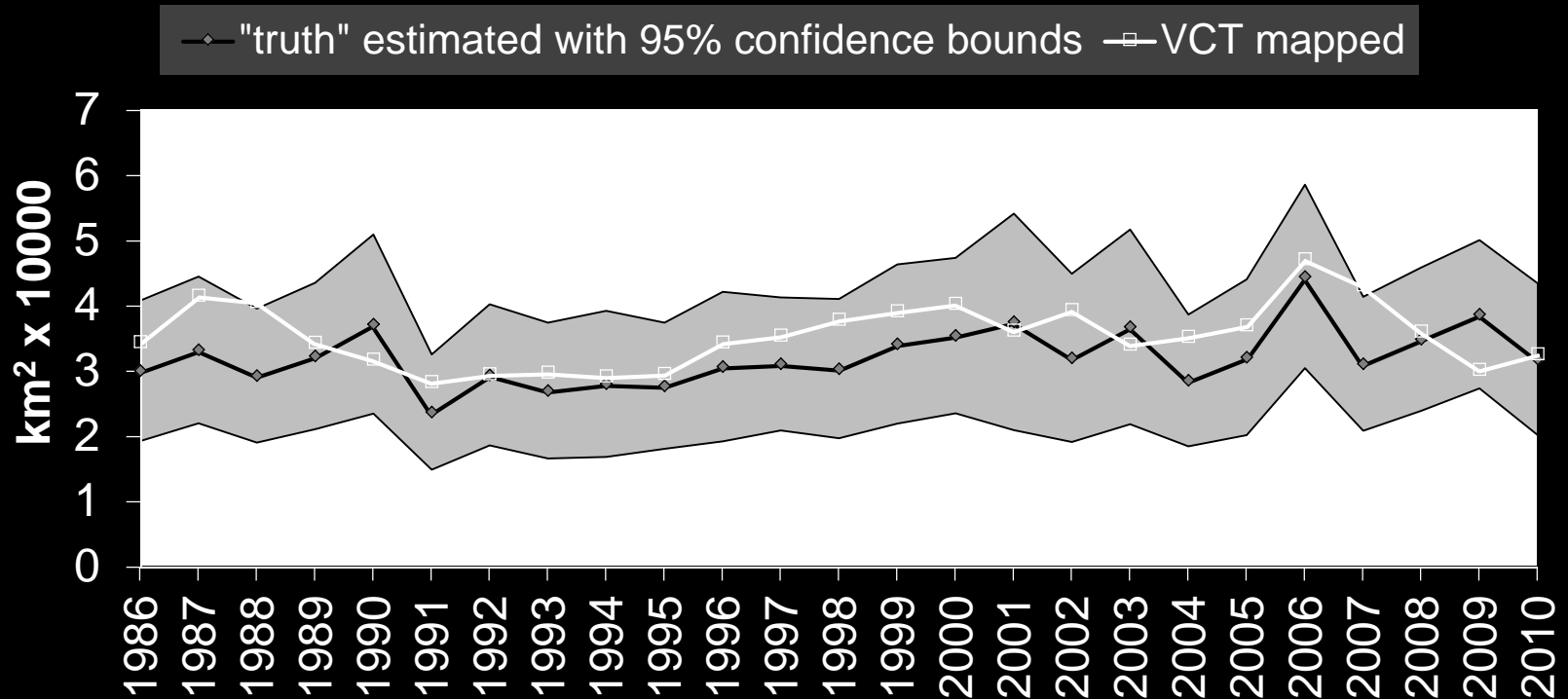
Huang et al., in Progress

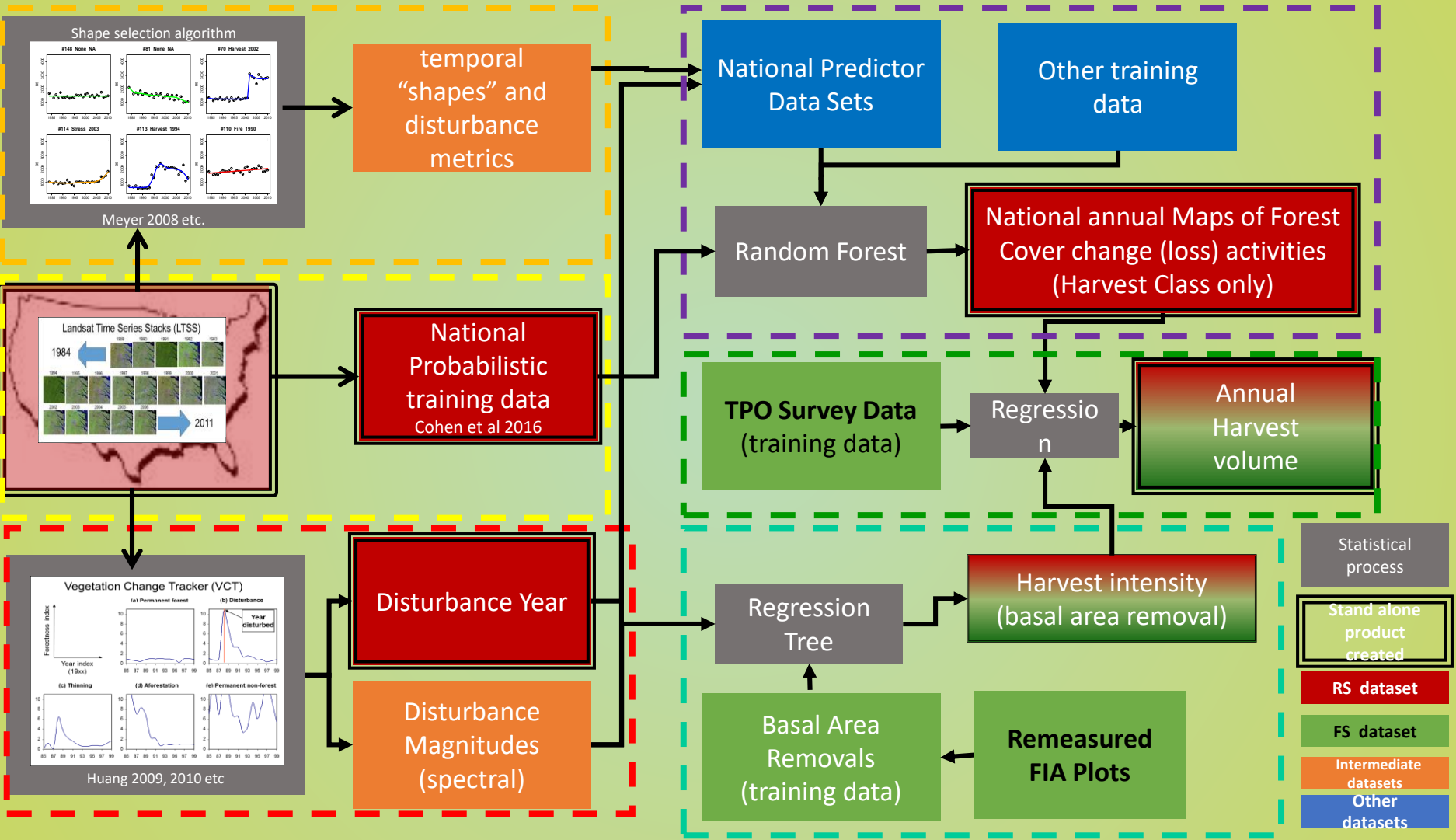
# 5-km Level Disturbance Rate Comparison, CONUS, 2000-2005



# *National Disturbance Rates, with bias from reference data*

## Annual Disturbed Forest Area from reference data and VCT maps







# Mapping Forest History from Landsat

## North American Forest Dynamics Research Project (NAFD)

Space	Time Record	Project Name	Yrs of funding	USFS	Ref	Detection	Timing	Repeat D	Regrowth	Severity	Attribution	Duration
3 P/R	84-00	NAFD pilot	03-05	Lister, Moisen	-	SR	E	E	I	I	-	
23 P/R	84-06	NAFD P I	05-08	Moisen, Cohen, Healey, Schroeder, Powell	-	SR	E	E	I	I	-	
25 P/R	84-06	NAFD PII	08-11	Moisen, Cohen, Healey, Schroeder, Powell, Nelson	Goward 2008, Stueve et al 2011, Huang et al 2011	SR	E	E	I	I	-	
CONUS (434/P/R)	84-10	NAFD-NEX	11-14	Mosien, Cohen, Schleeweis, Schroeder, Toney, Frescino, Freeman	Masek 2011, Schleeweis 2013, Goward 2016, Cohen 2016, Schleeweis 2016, Schroeder 2017, Zhoa ( In Review)	SR & D	E	E	I	I	(10 P/R pilot)	
CONUS (443/P/R)	84-16	NAFC	14-17	Moisen, Schleeweis, Toney		SR & D	E	E	E	E	E	E

I = Implicit, E = Explicit, SR= Stand Replacing, D = Degredation