



IMPACT. SCIENCE. SOLUTIONS.

Particulate Matter Estimation Tool

Version 1.0

This tool provides suggested techniques for estimating particulate matter emissions from a variety of sources, focusing on $PM_{2.5}$ and PM_{10} . It is available only to NCASI Members. It will be updated as more information becomes available. Other techniques may be more relevant for any company.



Power Generation



Roads and Pavement



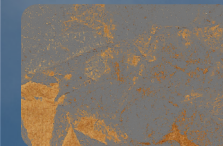
Materials Handling



Manufacture



CPM Precursor Bias



Particle Size Analysis



Abbreviation Glossary



Additional Information

Links to supporting information on the NCASI website require the user to be logged in to www.ncasi.org.

Resources for NCASI Members

All documents are listed in **blue** if they are available at ncasi.org, **green** if NCASI sends them to members upon request.

Special Report No. 14-05: Examining the Relationship between Filterable PM and Filterable PM_{2.5} in Boilers, Recovery Furnaces and Lime Kilns

White Paper No. 19-08: An Update to the Relationship Between Filterable PM_{2.5} and Filterable PM for Bark, Coal, and Combination Bark Boilers

Criteria Pollutants – Master Summary Table for Pulp and Paper Mills

Technical Bulletin No. 1070: Evaluation of PM_{2.5} Emissions from a Natural Gas-Fired Package Boiler

Special Report No. 15-01: Estimating the Potential for PM_{2.5} Emissions from Wood and Bark Handling

Technical Bulletin No. 1079: Evaluation of US EPA Method 202 for Precursor Bias

White Paper No. 24-06: Demonstration of Adjustment to EPA Method 202 Results to Compensate for Sulfur Dioxide and Ammonia-Induced Precursor Bias

White Paper: PM₁₀ and PM_{2.5} Emission Measurements From Wood Debarking and Chipping Operations

Air Emissions Database – Wood Products

Briefing Note No. 25-02: Emissions Characteristics of an Indirectly Heated, Batch Lumber Kiln: Primary PM_{2.5}, VOC, and HAPs

White Paper: NCASI Study to Characterize Organic and Fine Particulate Emissions from Corrugating/Converting Operations

Technical Bulletin No. 942: Measurement of PM, PM₁₀, PM_{2.5} and CPM Emissions from Paper Machine Sources

Technical Bulletin No. 1020: Compilation of Criteria Air Pollutant Emissions Data for Sources at Pulp and Paper Mills Including Boilers

Briefing Note No. 25-05: Evaluation of Particle Size Analysis Methods for Quantifying of PM_{2.5} Emissions from Forest Products Industry Sources

